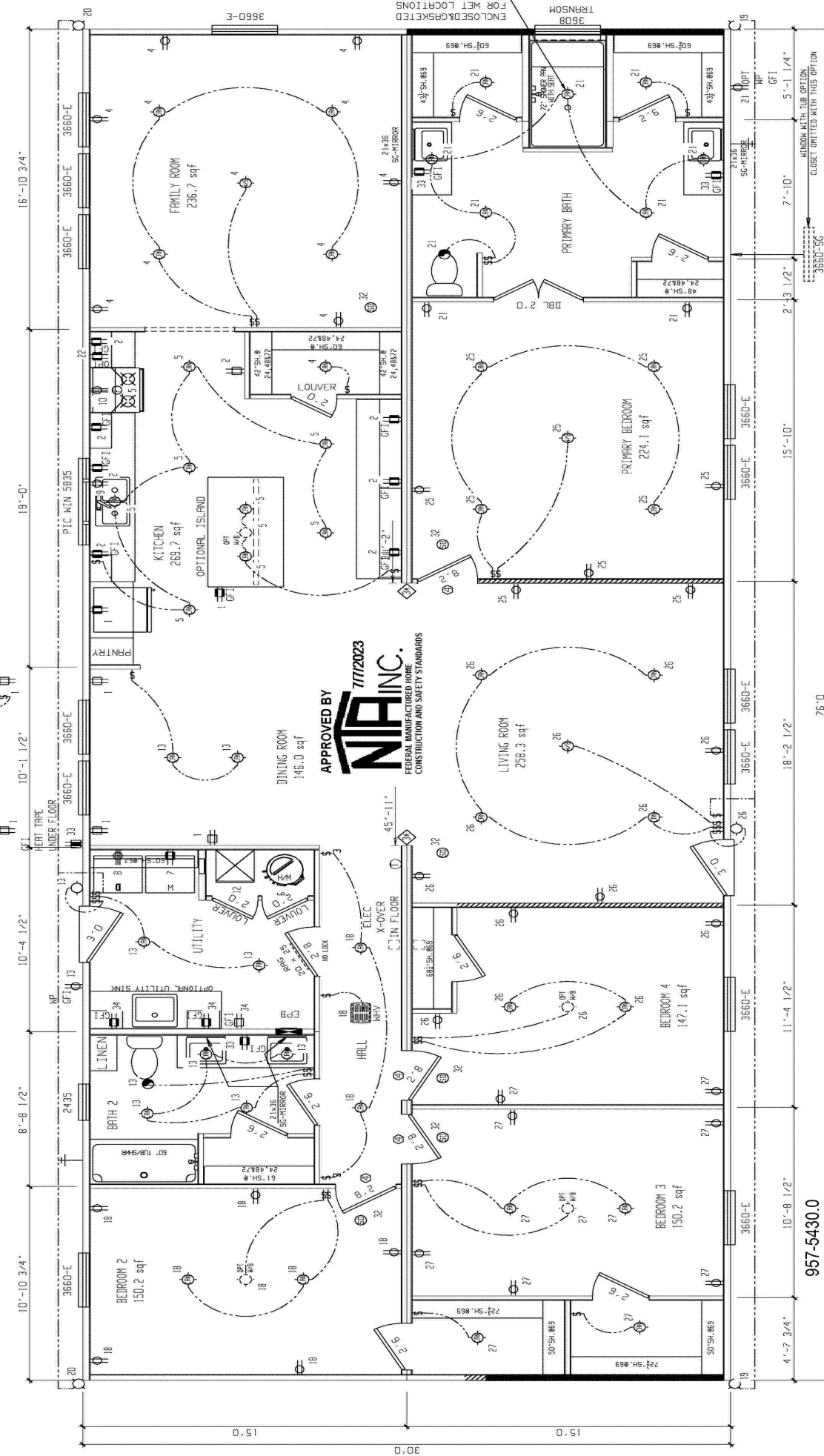


57
58
59
60
61
62
63
64
65
66
67
68
69
70
71
72
73
74
75
76
77
78
79
80
81
82
83
84
85
86
87
88
89
90
91
92
93
94
95
96
97
98
99
100



APPROVED BY
NIA INC.
7/17/2023
FEDERAL MANUFACTURED HOME
CONSTRUCTION AND SAFETY STANDARDS

NO.	DESCRIPTION	DATE	BY
1	ISSUED FOR PERMITS		
2	REVISED PER COMMENTS		
3	REVISED PER COMMENTS		
4	REVISED PER COMMENTS		
5	REVISED PER COMMENTS		
6	REVISED PER COMMENTS		
7	REVISED PER COMMENTS		
8	REVISED PER COMMENTS		
9	REVISED PER COMMENTS		
10	REVISED PER COMMENTS		
11	REVISED PER COMMENTS		
12	REVISED PER COMMENTS		
13	REVISED PER COMMENTS		
14	REVISED PER COMMENTS		
15	REVISED PER COMMENTS		
16	REVISED PER COMMENTS		
17	REVISED PER COMMENTS		
18	REVISED PER COMMENTS		
19	REVISED PER COMMENTS		
20	REVISED PER COMMENTS		
21	REVISED PER COMMENTS		
22	REVISED PER COMMENTS		
23	REVISED PER COMMENTS		
24	REVISED PER COMMENTS		
25	REVISED PER COMMENTS		
26	REVISED PER COMMENTS		
27	REVISED PER COMMENTS		
28	REVISED PER COMMENTS		
29	REVISED PER COMMENTS		
30	REVISED PER COMMENTS		
31	REVISED PER COMMENTS		
32	REVISED PER COMMENTS		
33	REVISED PER COMMENTS		
34	REVISED PER COMMENTS		
35	REVISED PER COMMENTS		
36	REVISED PER COMMENTS		
37	REVISED PER COMMENTS		
38	REVISED PER COMMENTS		
39	REVISED PER COMMENTS		
40	REVISED PER COMMENTS		
41	REVISED PER COMMENTS		
42	REVISED PER COMMENTS		
43	REVISED PER COMMENTS		
44	REVISED PER COMMENTS		
45	REVISED PER COMMENTS		
46	REVISED PER COMMENTS		
47	REVISED PER COMMENTS		
48	REVISED PER COMMENTS		
49	REVISED PER COMMENTS		
50	REVISED PER COMMENTS		
51	REVISED PER COMMENTS		
52	REVISED PER COMMENTS		
53	REVISED PER COMMENTS		
54	REVISED PER COMMENTS		
55	REVISED PER COMMENTS		
56	REVISED PER COMMENTS		
57	REVISED PER COMMENTS		
58	REVISED PER COMMENTS		
59	REVISED PER COMMENTS		
60	REVISED PER COMMENTS		
61	REVISED PER COMMENTS		
62	REVISED PER COMMENTS		
63	REVISED PER COMMENTS		
64	REVISED PER COMMENTS		
65	REVISED PER COMMENTS		
66	REVISED PER COMMENTS		
67	REVISED PER COMMENTS		
68	REVISED PER COMMENTS		
69	REVISED PER COMMENTS		
70	REVISED PER COMMENTS		
71	REVISED PER COMMENTS		
72	REVISED PER COMMENTS		
73	REVISED PER COMMENTS		
74	REVISED PER COMMENTS		
75	REVISED PER COMMENTS		
76	REVISED PER COMMENTS		
77	REVISED PER COMMENTS		
78	REVISED PER COMMENTS		
79	REVISED PER COMMENTS		
80	REVISED PER COMMENTS		
81	REVISED PER COMMENTS		
82	REVISED PER COMMENTS		
83	REVISED PER COMMENTS		
84	REVISED PER COMMENTS		
85	REVISED PER COMMENTS		
86	REVISED PER COMMENTS		
87	REVISED PER COMMENTS		
88	REVISED PER COMMENTS		
89	REVISED PER COMMENTS		
90	REVISED PER COMMENTS		
91	REVISED PER COMMENTS		
92	REVISED PER COMMENTS		
93	REVISED PER COMMENTS		
94	REVISED PER COMMENTS		
95	REVISED PER COMMENTS		
96	REVISED PER COMMENTS		
97	REVISED PER COMMENTS		
98	REVISED PER COMMENTS		
99	REVISED PER COMMENTS		
100	REVISED PER COMMENTS		

957-5430.0
CLAYTON HOME BUILDING GROUP

CLAYTON
SERIES
HR32

GENERAL NOTES
CEILING HEIGHT = 9'-0"
REFER TO DATA PAGE MH-2.0 FOR AREA LIGHT & VENT
REFER TO DATA PAGE EL-1.2 FOR ELEC. SYMBOL & BRANCH CIRCUIT NUMBER
FLOOR FINISHING SPACING = 16"
TOTAL WINDOW SFT = 222

DRAWING TITLE
MASTER PLAN

MODEL NAME: 5430
MODEL NO.: 2280
PLANT: 957
DESCRIPTION: 32X76 4BR-2BA
DRAWN BY: KLK
ORIG. DATE: 05/10/2023
DATE PRINTED: 07/06/2023
SHEET NO.: 1-1

RETURN AIR REQUIREMENTS
 1 20"x16" GRILL REQUIRED
 2 4"x10" GRILL w/ 2 1/2" DOOR UNDERCUT
 3 DOOR(S) MUST BE UNDERCUT 2 1/2" MIN.
 4 4"x24" OR 6"x14" GRILL REQUIRED IN COLUMNS

NO.	DESCRIPTION	DATE	BY
1	ISSUED FOR PERMITS		
2	REVISED PER COMMENTS		
3	REVISED PER COMMENTS		
4	REVISED PER COMMENTS		
5	REVISED PER COMMENTS		
6	REVISED PER COMMENTS		
7	REVISED PER COMMENTS		
8	REVISED PER COMMENTS		
9	REVISED PER COMMENTS		
10	REVISED PER COMMENTS		
11	REVISED PER COMMENTS		
12	REVISED PER COMMENTS		
13	REVISED PER COMMENTS		
14	REVISED PER COMMENTS		
15	REVISED PER COMMENTS		
16	REVISED PER COMMENTS		
17	REVISED PER COMMENTS		
18	REVISED PER COMMENTS		
19	REVISED PER COMMENTS		
20	REVISED PER COMMENTS		
21	REVISED PER COMMENTS		
22	REVISED PER COMMENTS		
23	REVISED PER COMMENTS		
24	REVISED PER COMMENTS		
25	REVISED PER COMMENTS		
26	REVISED PER COMMENTS		
27	REVISED PER COMMENTS		
28	REVISED PER COMMENTS		
29	REVISED PER COMMENTS		
30	REVISED PER COMMENTS		
31	REVISED PER COMMENTS		
32	REVISED PER COMMENTS		
33	REVISED PER COMMENTS		
34	REVISED PER COMMENTS		
35	REVISED PER COMMENTS		
36	REVISED PER COMMENTS		
37	REVISED PER COMMENTS		
38	REVISED PER COMMENTS		
39	REVISED PER COMMENTS		
40	REVISED PER COMMENTS		
41	REVISED PER COMMENTS		
42	REVISED PER COMMENTS		
43	REVISED PER COMMENTS		
44	REVISED PER COMMENTS		
45	REVISED PER COMMENTS		
46	REVISED PER COMMENTS		
47	REVISED PER COMMENTS		
48	REVISED PER COMMENTS		
49	REVISED PER COMMENTS		
50	REVISED PER COMMENTS		
51	REVISED PER COMMENTS		
52	REVISED PER COMMENTS		
53	REVISED PER COMMENTS		
54	REVISED PER COMMENTS		
55	REVISED PER COMMENTS		
56	REVISED PER COMMENTS		
57	REVISED PER COMMENTS		
58	REVISED PER COMMENTS		
59	REVISED PER COMMENTS		
60	REVISED PER COMMENTS		
61	REVISED PER COMMENTS		
62	REVISED PER COMMENTS		
63	REVISED PER COMMENTS		
64	REVISED PER COMMENTS		
65	REVISED PER COMMENTS		
66	REVISED PER COMMENTS		
67	REVISED PER COMMENTS		
68	REVISED PER COMMENTS		
69	REVISED PER COMMENTS		
70	REVISED PER COMMENTS		
71	REVISED PER COMMENTS		
72	REVISED PER COMMENTS		
73	REVISED PER COMMENTS		
74	REVISED PER COMMENTS		
75	REVISED PER COMMENTS		
76	REVISED PER COMMENTS		
77	REVISED PER COMMENTS		
78	REVISED PER COMMENTS		
79	REVISED PER COMMENTS		
80	REVISED PER COMMENTS		
81	REVISED PER COMMENTS		
82	REVISED PER COMMENTS		
83	REVISED PER COMMENTS		
84	REVISED PER COMMENTS		
85	REVISED PER COMMENTS		
86	REVISED PER COMMENTS		
87	REVISED PER COMMENTS		
88	REVISED PER COMMENTS		
89	REVISED PER COMMENTS		
90	REVISED PER COMMENTS		
91	REVISED PER COMMENTS		
92	REVISED PER COMMENTS		
93	REVISED PER COMMENTS		
94	REVISED PER COMMENTS		
95	REVISED PER COMMENTS		
96	REVISED PER COMMENTS		
97	REVISED PER COMMENTS		
98	REVISED PER COMMENTS		
99	REVISED PER COMMENTS		
100	REVISED PER COMMENTS		

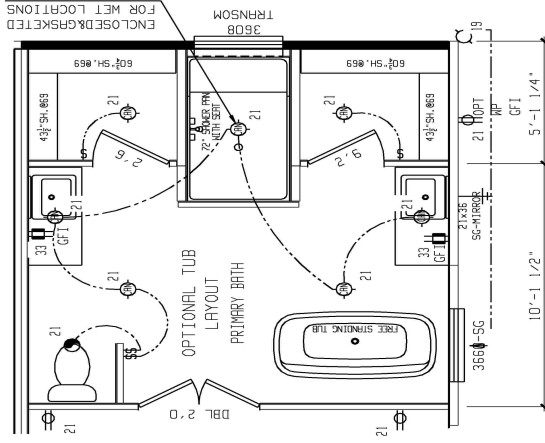
INDICATES REQUIRED NUMBER OF STUDS IN COLUMN
 THE * SPECIFIES THAT THERE CAN BE NO HOLES IN STUDS IN COLUMNS

INDICATES REQUIRED NUMBER OF STUDS IN COLUMN
 THE * SPECIFIES THAT THERE CAN BE NO HOLES IN STUDS IN COLUMNS

57 56 55 54 53 52 51 50 49 48 47 46 45 44 43 42 41 40 39 38 37 36 35 34 33 32 31 30 29 28 27 26 25 24 23 22 21 20 19 18 17 16 15 14 13 12 11 10 9 8 7 6 5 4 3 2 1 0

APPROVED BY

 FEDERAL MANUFACTURED HOME
 CONSTRUCTION AND SAFETY STANDARDS



957-5430.0.1

NO.	DATE	BY	REVISIONS

BRAND	CLAYTON	SERIES	HR32
DRAWING TITLE	MASTER PLAN #2		
GENERAL NOTES	CEILING HEIGHT = 96.00 REFER TO DDP/PA PAGE MP-2.0 FOR AREA LIGHT & VENT REFER TO DDP/PA PAGE EL-1.2 FOR ELEC. SYMBOL & BRANCH CIRCUIT NUMBER		
MODEL NAME	5430	50. FT.	2280
PLANT	32X76 4BR-2BA	MODEL NO.	5430
DRAWN BY	KLK	DATE PRINTED	07/28/2023
ORIG. DATE	05/10/2023	SHEET NO.	1-2

NO.	DATE	BY	REVISIONS

NO.	DATE	BY	REVISIONS

RETURN AIR REQUIREMENTS

- 1 20"x16" GRILL REQUIRED
- 2 4"x10" GRILL w/ 2 1/2" DOOR UNDERCUT
- 3 DOOR(S) MUST BE UNDERCUT 2 1/2" MIN.
- 4 4"x24" OR 6"x14" GRILL REQUIRED

INDICATES REQUIRED NUMBER OF STUDS IN COLUMN

THE * SPECIFIES THAT THERE CAN BE NO HOLES IN STUDS IN COLUMNS

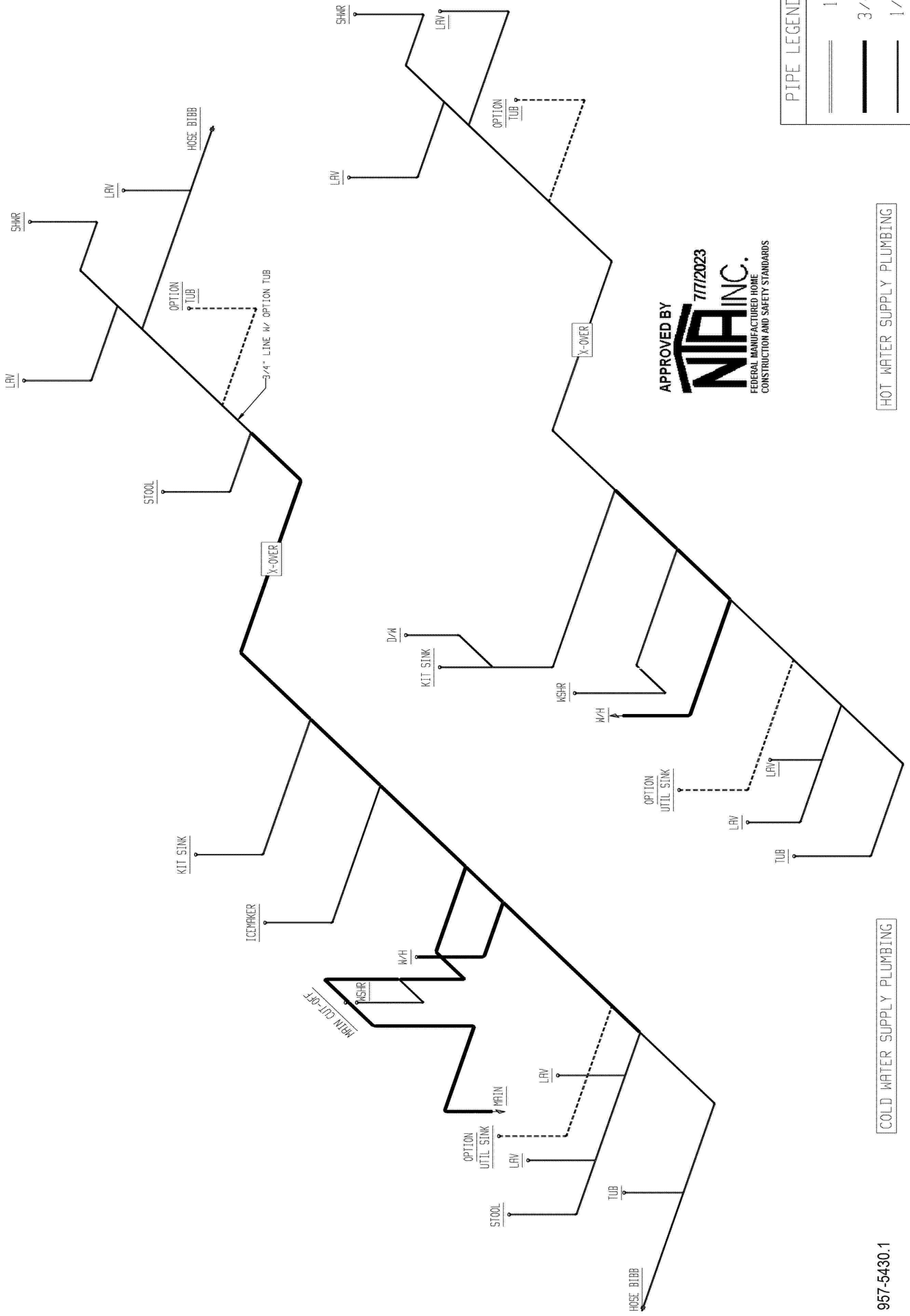


Model # 5430
 Box Width = 180 " Double wide Minimum Joist Spacing 16 "
 Box Length = 76 ft. 99.5" 10" MIN. IBEAM No Offset Box
 No Skylights No Clerestory
 No Porches No Origami Dormer
 Joist Size = #2 spf 2x8 Lags 9Mx3" No Sunken Floor
 No Parapet Roof

Version R13.20

Wind Zone 1 Standard Roof							96 inch sidewall	
Diaphragm Construction:							(3/8" sheathing only with 16ga. @ 4/8 oc) [132 plf] Chords: 2x4 SPF #3 Top Plate & 2x4 Rail. Each spliced w/ 12" glue block.	
Shearwall	Dist./ Hitch	Length	PLF	# of Joists	Lags	Notes	SW1/SW2	
A	0'	139"	210	2	2/2	Split Shearwall *	68/71	
B	76'	132"	210	2	2/1			
Wind Zone 2 Standard Roof							96 inch sidewall	
Diaphragm Construction:							(3/8" sheathing w/ceiling with 16ga. @ 4/8 oc) [232 plf] Chords: 2x4 SPF #3 Top Plate & 2x4 Rail. Each spliced w/ 12" glue block.	
Shearwall	Dist./ Hitch	Length	PLF	# of Joists	Lags	Notes	SW1/SW2	% over
A	0'	139"	210	2	2/2	Split Shearwall *	68/71	0.72
B	76'	120"	210	2	2/1			
C	31.08'	132"	350	2	3/1			
D	49.25'	124"	350	2	3/1			
Wind Zone 3 Standard Roof							96 inch sidewall	
Diaphragm Construction:							(3/8" sheathing w/ceiling with 16ga. @ 4/8 oc) [232 plf] Chords: 2x4 SPF #3 Top Plate & 2x4 Rail. Each spliced w/ 12" glue block.	
Shearwall	Dist./ Hitch	Length	PLF	# of Joists	Lags	Notes	SW1/SW2	
A	0'	139"	420	2	4/4	Split Shearwall *	68/71	
B	76'	144"	210	2	3/1			
C	31.08'	136"	420	2	4/1			
D	49.25'	148"	350	2	4/2			
Wind Zone 4 Standard Roof							96 inch sidewall	
Diaphragm Construction:							(3/8" sheathing only with 14ga. @ 6/6 oc) [172 plf] Chords: 2x4 SPF #3 Top Plate & 2x4 Rail. Each spliced w/ 12" glue block.	
Shearwall	Dist./ Hitch	Length	PLF	# of Joists	Lags	Notes		

* Denotes that indicated shearwall is over full depth/width front steel chassis header. Designed by KLIK



APPROVED BY
NIA INC.
 FEDERAL MANUFACTURED HOME
 CONSTRUCTION AND SAFETY STANDARDS

PIPE LEGEND

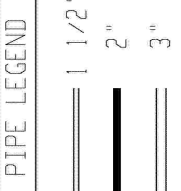
1"
3/4"
1/2"

HOT WATER SUPPLY PLUMBING

COLD WATER SUPPLY PLUMBING

957-5430.1

BRAND CLAYTON	SERIES HR32	DRAWING TITLE		MODEL NAME	SO. FT.
		SUPPLY PLUMBING		5430	2280
REVISIONS		GENERAL NOTES		PLANT	MODEL NO.
		HOSE BIBBS PER SPECS		957	5430
BY		DATE		ORIGIN	DATE PRINTED
				KLK	07/06/2023
CLAYTON HOME BUILDING GROUP		DATE PRINTED		DATE PRINTED	SHEET NO.
				07/06/2023	9-1

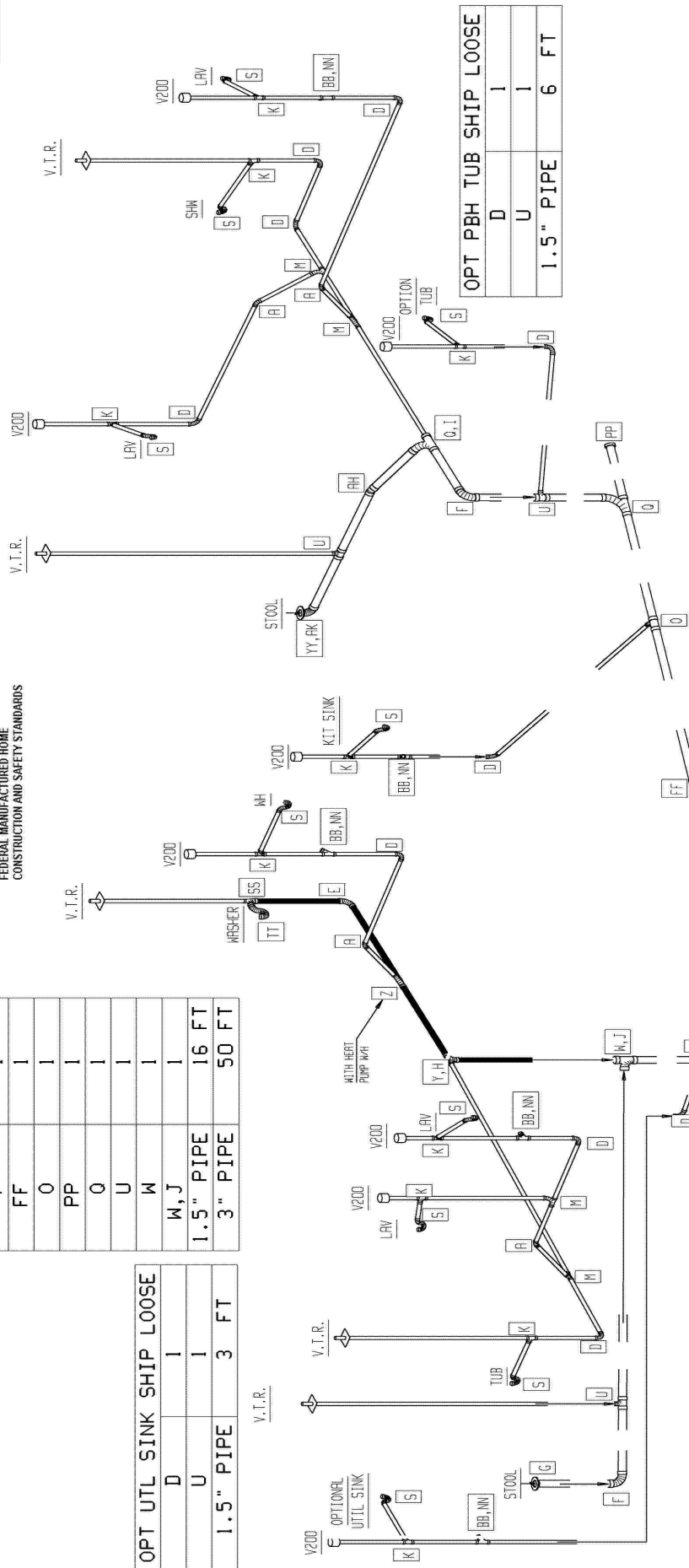


PIPING AND FITTING MATERIAL TYPE TO BE:
 ABS (ACRYLONITRILE-BUTADIENE-STYRENE)
 OR PVC (POLYVINYL CHLORIDE)



STANDARD SHIP LOOSE	
D	1
F	1
FF	1
O	1
PP	1
Q	1
U	1
W	1
W, J	1
1.5" PIPE	16 FT
3" PIPE	50 FT

OPT UTL SINK SHIP LOOSE	
D	1
U	1
1.5" PIPE	3 FT



OPT PBH TUB SHIP LOOSE	
D	1
U	1
1.5" PIPE	6 FT

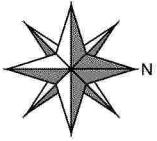
LET	DESCRIPTION	LET	DESCRIPTION	LET	DESCRIPTION	LET	DESCRIPTION
B	1.5" x 1/8" LSWEEP 1/4" BEND	C	3" x 1/8" LSWEEP 1/4" BEND	D	1.5" x 1/8" LONG SWEET 1/4" BEND	D	1.5" x 1/8" LONG SWEET 1/4" BEND
C	2" x 3/4" LSWEEP 1/4" BEND	G	4" x 3" LSWEEP 1/4" BEND	H	3" x 1.5" W/ELB BUSHING	H	3" x 1.5" W/ELB BUSHING
E	2" x 1.5" LSWEEP 1/4" BEND	J	3" x 2" ELBUSH BUSHING	I	1.5" SPLITARY TEE	I	1.5" SPLITARY TEE
F	3" x 1.5" LSWEEP 1/4" BEND	K	2" LITTY	L	3" x 1.5" x 1.5" LITTY	L	3" x 1.5" x 1.5" LITTY
M	3" LITTY	N	3" x 1.5" x 1.5" LITTY	O	1.5" x 1.5" P-TAPP	P	3" x 1.5" x 1.5" LITTY
O	3" LITTY	R	1.5" x 1.5" x 1.5" LITTY	S	3" x 1.5" x 1.5" LITTY	T	3" x 1.5" x 1.5" LITTY
Q	3" x 1.5" x 1.5" LITTY	U	1.5" x 1.5" x 1.5" LITTY	V	3" x 1.5" x 1.5" LITTY	V	3" x 1.5" x 1.5" LITTY
R	2" x 1.5" x 1.5" LITTY	W	3" x 1.5" x 1.5" LITTY	X	3" x 1.5" x 1.5" LITTY	X	3" x 1.5" x 1.5" LITTY
S	2" x 1.5" x 1.5" LITTY	Y	3" x 1.5" x 1.5" LITTY	Z	3" x 1.5" x 1.5" LITTY	Z	3" x 1.5" x 1.5" LITTY
T	3" x 1.5" x 1.5" LITTY	AA	3" x 1.5" x 1.5" LITTY	AB	3" x 1.5" x 1.5" LITTY	AB	3" x 1.5" x 1.5" LITTY
U	3" x 1.5" x 1.5" LITTY	AC	3" x 1.5" x 1.5" LITTY	AD	3" x 1.5" x 1.5" LITTY	AD	3" x 1.5" x 1.5" LITTY
V	3" x 1.5" x 1.5" LITTY	AE	3" x 1.5" x 1.5" LITTY	AF	3" x 1.5" x 1.5" LITTY	AF	3" x 1.5" x 1.5" LITTY
W	3" x 1.5" x 1.5" LITTY	AG	3" x 1.5" x 1.5" LITTY	AH	3" x 1.5" x 1.5" LITTY	AH	3" x 1.5" x 1.5" LITTY
X	3" x 1.5" x 1.5" LITTY	AI	3" x 1.5" x 1.5" LITTY	AJ	3" x 1.5" x 1.5" LITTY	AJ	3" x 1.5" x 1.5" LITTY
Y	3" x 1.5" x 1.5" LITTY	AK	3" x 1.5" x 1.5" LITTY	AL	3" x 1.5" x 1.5" LITTY	AL	3" x 1.5" x 1.5" LITTY
Z	3" x 1.5" x 1.5" LITTY	AM	3" x 1.5" x 1.5" LITTY	AN	3" x 1.5" x 1.5" LITTY	AN	3" x 1.5" x 1.5" LITTY
AA	3" x 1.5" x 1.5" LITTY	AO	3" x 1.5" x 1.5" LITTY	AP	3" x 1.5" x 1.5" LITTY	AP	3" x 1.5" x 1.5" LITTY
AB	3" x 1.5" x 1.5" LITTY	AQ	3" x 1.5" x 1.5" LITTY	AR	3" x 1.5" x 1.5" LITTY	AR	3" x 1.5" x 1.5" LITTY
AC	3" x 1.5" x 1.5" LITTY	AS	3" x 1.5" x 1.5" LITTY	AT	3" x 1.5" x 1.5" LITTY	AT	3" x 1.5" x 1.5" LITTY
AD	3" x 1.5" x 1.5" LITTY	AU	3" x 1.5" x 1.5" LITTY	AV	3" x 1.5" x 1.5" LITTY	AV	3" x 1.5" x 1.5" LITTY
AE	3" x 1.5" x 1.5" LITTY	AW	3" x 1.5" x 1.5" LITTY	AX	3" x 1.5" x 1.5" LITTY	AX	3" x 1.5" x 1.5" LITTY
AF	3" x 1.5" x 1.5" LITTY	AY	3" x 1.5" x 1.5" LITTY	AZ	3" x 1.5" x 1.5" LITTY	AZ	3" x 1.5" x 1.5" LITTY
AG	3" x 1.5" x 1.5" LITTY	BA	3" x 1.5" x 1.5" LITTY	BB	3" x 1.5" x 1.5" LITTY	BB	3" x 1.5" x 1.5" LITTY
AH	3" x 1.5" x 1.5" LITTY	BB	3" x 1.5" x 1.5" LITTY	BC	3" x 1.5" x 1.5" LITTY	BC	3" x 1.5" x 1.5" LITTY
AI	3" x 1.5" x 1.5" LITTY	BB	3" x 1.5" x 1.5" LITTY	BD	3" x 1.5" x 1.5" LITTY	BD	3" x 1.5" x 1.5" LITTY
AJ	3" x 1.5" x 1.5" LITTY	BB	3" x 1.5" x 1.5" LITTY	BE	3" x 1.5" x 1.5" LITTY	BE	3" x 1.5" x 1.5" LITTY
AK	3" x 1.5" x 1.5" LITTY	BB	3" x 1.5" x 1.5" LITTY	BF	3" x 1.5" x 1.5" LITTY	BF	3" x 1.5" x 1.5" LITTY
AL	3" x 1.5" x 1.5" LITTY	BB	3" x 1.5" x 1.5" LITTY	BG	3" x 1.5" x 1.5" LITTY	BG	3" x 1.5" x 1.5" LITTY
AM	3" x 1.5" x 1.5" LITTY	BB	3" x 1.5" x 1.5" LITTY	BH	3" x 1.5" x 1.5" LITTY	BH	3" x 1.5" x 1.5" LITTY
AN	3" x 1.5" x 1.5" LITTY	BB	3" x 1.5" x 1.5" LITTY	BI	3" x 1.5" x 1.5" LITTY	BI	3" x 1.5" x 1.5" LITTY
AO	3" x 1.5" x 1.5" LITTY	BB	3" x 1.5" x 1.5" LITTY	BJ	3" x 1.5" x 1.5" LITTY	BJ	3" x 1.5" x 1.5" LITTY
AP	3" x 1.5" x 1.5" LITTY	BB	3" x 1.5" x 1.5" LITTY	BK	3" x 1.5" x 1.5" LITTY	BK	3" x 1.5" x 1.5" LITTY
AQ	3" x 1.5" x 1.5" LITTY	BB	3" x 1.5" x 1.5" LITTY	BL	3" x 1.5" x 1.5" LITTY	BL	3" x 1.5" x 1.5" LITTY
AR	3" x 1.5" x 1.5" LITTY	BB	3" x 1.5" x 1.5" LITTY				
AS	3" x 1.5" x 1.5" LITTY	BB	3" x 1.5" x 1.5" LITTY				
AT	3" x 1.5" x 1.5" LITTY	BB	3" x 1.5" x 1.5" LITTY				
AU	3" x 1.5" x 1.5" LITTY	BB	3" x 1.5" x 1.5" LITTY				
AV	3" x 1.5" x 1.5" LITTY	BB	3" x 1.5" x 1.5" LITTY				
AW	3" x 1.5" x 1.5" LITTY	BB	3" x 1.5" x 1.5" LITTY				
AX	3" x 1.5" x 1.5" LITTY	BB	3" x 1.5" x 1.5" LITTY				
AY	3" x 1.5" x 1.5" LITTY	BB	3" x 1.5" x 1.5" LITTY				
AZ	3" x 1.5" x 1.5" LITTY	BB	3" x 1.5" x 1.5" LITTY				
BA	3" x 1.5" x 1.5" LITTY	BB	3" x 1.5" x 1.5" LITTY				
BB	3" x 1.5" x 1.5" LITTY	BB	3" x 1.5" x 1.5" LITTY				
BC	3" x 1.5" x 1.5" LITTY	BB	3" x 1.5" x 1.5" LITTY				
BD	3" x 1.5" x 1.5" LITTY	BB	3" x 1.5" x 1.5" LITTY				
BE	3" x 1.5" x 1.5" LITTY	BB	3" x 1.5" x 1.5" LITTY				
BF	3" x 1.5" x 1.5" LITTY	BB	3" x 1.5" x 1.5" LITTY				
BG	3" x 1.5" x 1.5" LITTY	BB	3" x 1.5" x 1.5" LITTY				
BH	3" x 1.5" x 1.5" LITTY	BB	3" x 1.5" x 1.5" LITTY				
BI	3" x 1.5" x 1.5" LITTY	BB	3" x 1.5" x 1.5" LITTY				
BJ	3" x 1.5" x 1.5" LITTY	BB	3" x 1.5" x 1.5" LITTY				
BK	3" x 1.5" x 1.5" LITTY	BB	3" x 1.5" x 1.5" LITTY				
BL	3" x 1.5" x 1.5" LITTY	BB	3" x 1.5" x 1.5" LITTY				

957-5430.2

BRAND	SERIES	DATE	BY	REVISIONS	GENERAL NOTES
CLAYTON	HR32				

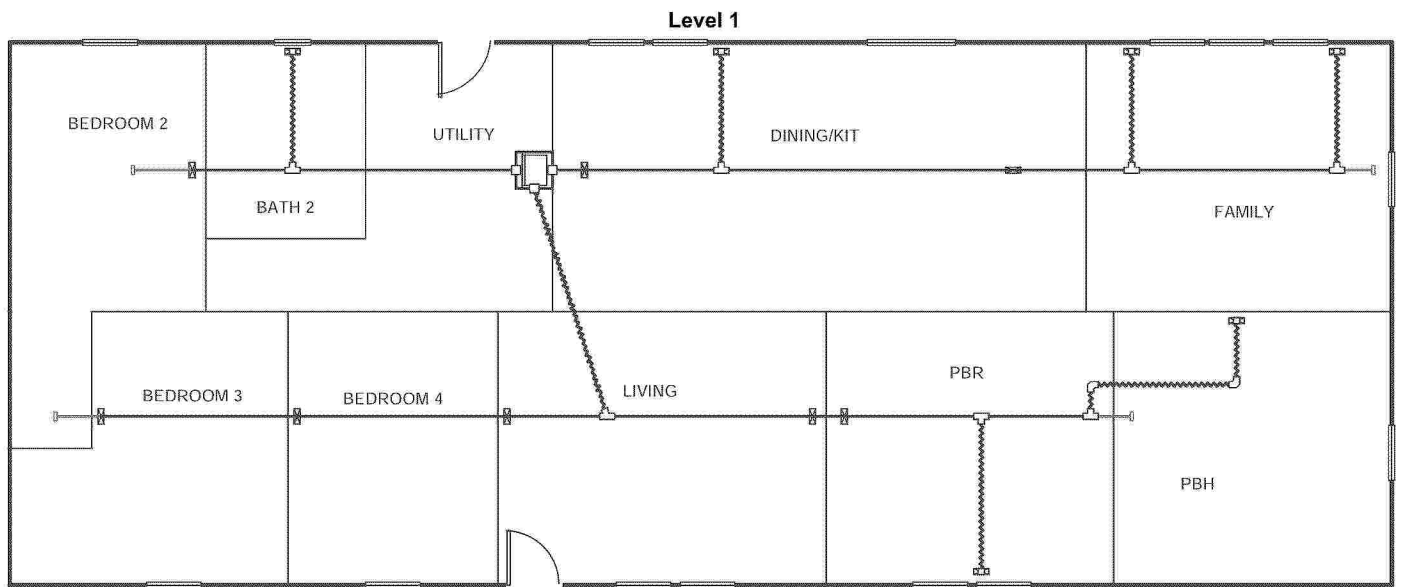
DWY SCHEMATIC		MODEL NAME		MODEL NO.	SHEET NO.
957	32X76 4BR-2BR	5430	2280	5430	8-1
KLK	05/10/2023	KLK	07/05/2023	DATE PRINTED	DATE PRINTED

CLAYTON HOME BUILDING GROUP



APPROVED BY
NIA INC.
FEDERAL MANUFACTURED HOME
CONSTRUCTION AND SAFETY STANDARDS

REVISED
7/12/2023



957-5430.4.1

Job #: 5430 (INLINE)
Performed by CLAYTON ROCKWELL for
5430 (INLINE)
ROCKWELL, NC

Scale: 1 : 126
Page 1
Right-Suite® Universal 2023
23.0.01 RSU28035
2023-Jul-11 10:31:32
R:WRITESOFT\5430(I).rup

Project Information

For: 5430 (INLINE), CLAYTON 957
 ROCKWELL, NC

Notes: DUCT COOLING CAPACITY = 36667 BTU/HR



Design Information

Weather: Fort Bragg/Simmons, NC, US

Winter Design Conditions

Outside db 26 °F
 Inside db 70 °F
 Design TD 44 °F

Summer Design Conditions

Outside db 95 °F
 Inside db 75 °F
 Design TD 20 °F
 Daily range M
 Relative humidity 50 %
 Moisture difference 41 gr/lb

Heating Summary

Structure 20130 Btuh
 Ducts 0 Btuh
Central vent (90 cfm) **4338** Btuh
Outside air
 Humidification 0 Btuh
 Piping 0 Btuh
 Equipment load 24467 Btuh

Sensible Cooling Equipment Load Sizing

Structure 20169 Btuh
 Ducts 0 Btuh
Central vent (90 cfm) **1933** Btuh
Outside air
 Blower 0 Btuh
 Use manufacturer's data n
 Rate/swing multiplier 1.00
 Equipment sensible load 22036 Btuh

Infiltration

Method Simplified
 Construction quality Semi-tight
 Fireplaces 0

	Heating	Cooling
Area (ft ²)	2254	2254
Volume (ft ³)	20282	20282
Air changes/hour	0.22	0.11
Equiv. AVF (cfm)	74	37

Latent Cooling Equipment Load Sizing

Structure 2019 Btuh
 Ducts 0 Btuh
Central vent (90 cfm) **2465** Btuh
Outside air
 Equipment latent load 4484 Btuh
Equipment Total Load (Sen+Lat) 26520 Btuh
 Req. total capacity at 0.70 SHR 2.6 ton

Heating Equipment Summary

Make Smart Comfort
 Trade
 Model
 AHRI ref

Efficiency 100 EFF
 Heating input 15.0 kW
 Heating output 51182 Btuh
 Temperature rise 43 °F
 Actual air flow 1100 cfm
 Air flow factor 0.055 cfm/Btuh
 Static pressure 0.30 in H2O
 Space thermostat

Cooling Equipment Summary

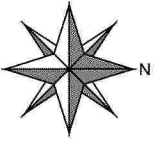
Make Smart Comfort
 Trade 15 SEER2 AC
 Cond R4A5S36*K*WAA*
 Coil FEVA0036**+NAVA43601CK
 AHRI ref 0

Efficiency 12.5 EER2, 15.2 SEER2
 Sensible cooling 23100 Btuh
 Latent cooling 9900 Btuh
 Total cooling 33000 Btuh
 Actual air flow 1100 cfm
 Air flow factor 0.055 cfm/Btuh
 Static pressure 0.30 in H2O
 Load sensible heat ratio 0.83

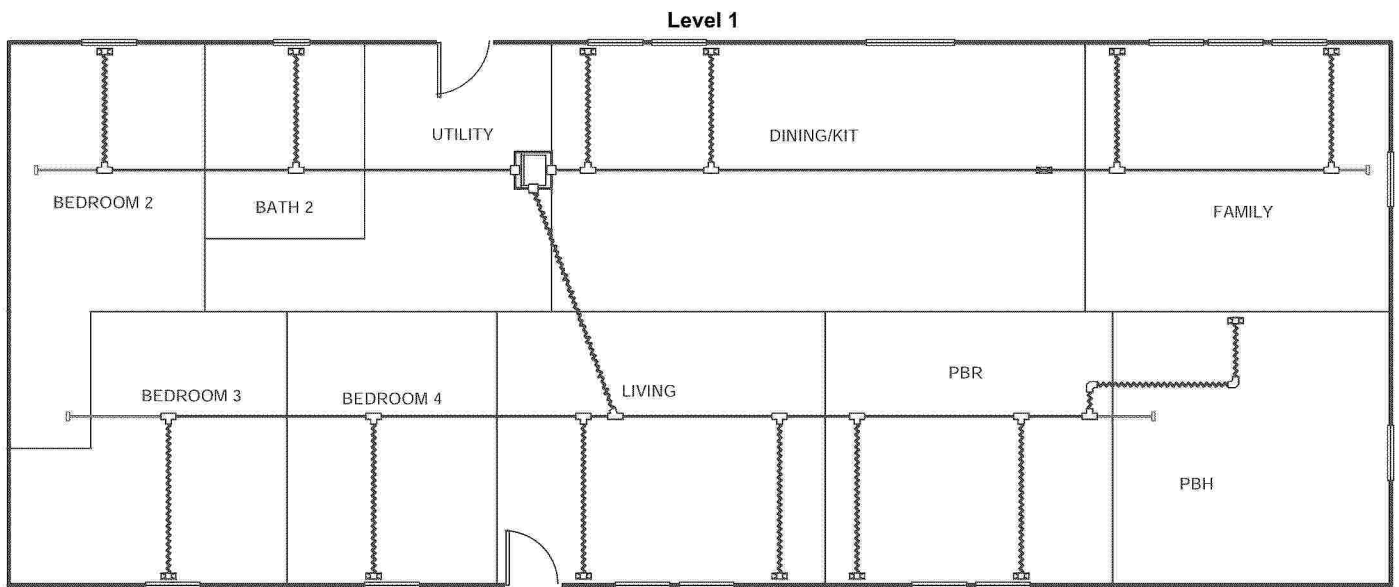
957-5430.4.2

Bold/italic values have been manually overridden

Calculations approved by ACCA to meet all requirements of Manual J 8th Ed.



APPROVED BY
NIA INC.
REVISÉ
7/12/2023
FEDERAL MANUFACTURED HOME
CONSTRUCTION AND SAFETY STANDARDS



957-5430.4.3

Job #: 5430 (PERIMETER)
Performed by **CLAYTON ROCKWELL** for
5430 (PERIMETER)
ROCKWELL, NC

Scale: 1 : 126
Page 1
Right-Suite® Universal 2023
23.0.01 RSU28035
2023-Jul-11 10:37:17
R:\WRITESOFT\5430(p).rup

Project Information

For: 5430 (PERIMETER), CLAYTON 957
 ROCKWELL, NC

Notes: DUCT COOLING CAPACITY = 36667 BTU/HR

APPROVED BY

 REVISED
 7/12/2023
 FEDERAL MANUFACTURED HOME
 CONSTRUCTION AND SAFETY STANDARDS

Design Information

Weather: Fort Bragg/Simmons, NC, US

Winter Design Conditions

Outside db 26 °F
 Inside db 70 °F
 Design TD 44 °F

Summer Design Conditions

Outside db 95 °F
 Inside db 75 °F
 Design TD 20 °F
 Daily range M
 Relative humidity 50 %
 Moisture difference 41 gr/lb

Heating Summary

Structure 20130 Btuh
 Ducts 0 Btuh
Central vent (90 cfm) **4338** Btuh
Outside air
 Humidification 0 Btuh
 Piping 0 Btuh
 Equipment load 24467 Btuh

Sensible Cooling Equipment Load Sizing

Structure 20169 Btuh
 Ducts 0 Btuh
Central vent (90 cfm) **1933** Btuh
Outside air
 Blower 0 Btuh
 Use manufacturer's data n
 Rate/swing multiplier 1.00
 Equipment sensible load 22036 Btuh

Infiltration

Method Simplified
 Construction quality Semi-tight
 Fireplaces 0

	Heating	Cooling
Area (ft ²)	2254	2254
Volume (ft ³)	20282	20282
Air changes/hour	0.22	0.11
Equiv. AVF (cfm)	74	37

Latent Cooling Equipment Load Sizing

Structure 2019 Btuh
 Ducts 0 Btuh
Central vent (90 cfm) **2465** Btuh
Outside air
 Equipment latent load 4484 Btuh
Equipment Total Load (Sen+Lat) 26520 Btuh
 Req. total capacity at 0.70 SHR 2.6 ton

Heating Equipment Summary

Make Smart Comfort
 Trade
 Model
 AHRI ref
 Efficiency 100 EFF
 Heating input 15.0 kW
 Heating output 51182 Btuh
 Temperature rise 43 °F
 Actual air flow 1100 cfm
 Air flow factor 0.055 cfm/Btuh
 Static pressure 0.30 in H2O
 Space thermostat

Cooling Equipment Summary

Make Smart Comfort
 Trade 15 SEER2 AC
 Cond R4A5S36*K*WAA*
 Coil FEVA0036**+NAVA43601CK
 AHRI ref 0
 Efficiency 12.5 EER2, 15.2 SEER2
 Sensible cooling 23100 Btuh
 Latent cooling 9900 Btuh
 Total cooling 33000 Btuh
 Actual air flow 1100 cfm
 Air flow factor 0.055 cfm/Btuh
 Static pressure 0.30 in H2O
 Load sensible heat ratio 0.83

957-5430.4.4

Bold/italic values have been manually overridden

Calculations approved by ACCA to meet all requirements of Manual J 8th Ed.

CLAYTON HOME BUILDING GROUP

5430 ZN 1&2

Model Number	57HRC32764AH	Drawing Number	5430
			Version 13

BOX SIZE: 30 ft. x 76 ft.

AVG. SIDEWALL HEIGHT = 8 FEET

PERCENTAGE OF CEILING THAT IS VAULTED = 0%

12 INCH DIAMETER XOVER DUCT AREA = 78.5 SQ.FT. MAX. WITH R-8 INSULATION

IN-FLOOR DUCT SYSTEM

	UNHEATED FLOOR	WALL	FLAT ROOF
INSULATION VALUES	R-22 FW	R-13	R-38
DAPIA PAGE	THP-164	THP-552	THP-1409
U VALUE (BTUH/SQ.FT.-F)	0.045	0.0808	0.0281

Overhead Duct	
Diameter	Length
4	0
5	0
6	0
7	0
8	0
9	0
10	0
11	0
14	0
Exterior Supply	Length
14	0
16	0
Exterior Return	Length
14	0
16	0



Window Glass Area:

Th. Zone 1:
Th. Zone 2:
Th. Zone 3:
Overhead TZ 1:
Overhead TZ 2:
Overhead TZ 3:

	Area	U Value	UA
Doors: Front	21.00	0.300	6.30
Rear	21.00	0.300	6.30
Other Door	0.00	0.280	0.00
Other Door	0.00	0.330	0.00
OSB	0.00	0.000	0.00
Skylights	0.00	0.330	0.00
Standard	238.00	0.300	71.40
Option	0.00	0.300	0.00
Net: Floor	2280.00	0.045	103.51
Wall	1416.00	0.081	114.41
Ceiling	2280.00	0.0281	64.07
Ext. Duct	78.50	0.242	18.98
Ext. Duct	78.50	0.223	17.48
Ext. Duct	78.50	0.206	16.14
Supply	0.00	0.000	0.00
Supply	0.00	0.000	0.00
Supply	0.00	0.000	0.00

Energy Star v3 & ZERH Max Glass (sq ft)	
Th. Zone 1	516.2
Th. Zone 2	320.7
Th. Zone 3	66.8

	Outdoor Design Temp (F)	UA	Uo	Heatloss BTUH/F
Thermal Zone 1	11	384.98	0.061	533.40
Thermal Zone 2	0	383.47	0.061	531.90
Thermal Zone 3	-14	382.13	0.060	530.50

Design Temperatures

Furnace Heating Temp (F)	Economy Outdoor Temp (F)	
6	26	10kW
-7	16	12kW
-26	3	15kW
-5	18	40k Gas
-42	-9	60k Gas
-80	-35	80k Gas

Thermal Zone	U-Value	Thermal Zone	U-Value	Thermal Zone	U-Value
Energy Star Version 2					
1-EHP-S	0.080	2-EHP-S	0.080	3-EHP-S	0.079
1-GAS-S	0.080	2-GAS-S	0.080	3-GAS-S	0.071
1-ENV-S	0.076	2-ENV-S	0.067	3-ENV-S	0.059
1-EHP-M	0.074	2-EHP-M	0.074	3-EHP-M	0.074
1-GAS-M	0.074	2-GAS-M	0.074	3-GAS-M	0.065
1-ENV-M	0.071	2-ENV-M	0.064	3-ENV-M	0.056

Energy Star Version 3 & ZERH					
1 Single	0.076	2 Single	0.065	3 Single	0.057
1 Double	0.070	2 Double	0.063	3 Double	0.054

957-5430.4.5

CLAYTON HOME BUILDING GROUP

5430 ZN 3

Model Number	57HRC32764AH	Drawing Number	5430
			Version 13

BOX SIZE: 30 ft. x 76 ft.

AVG. SIDEWALL HEIGHT = 8 FEET

PERCENTAGE OF CEILING THAT IS VAULTED = 0%

12 INCH DIAMETER XOVER DUCT AREA = 78.5 SQ.FT. MAX. WITH R-8 INSULATION

IN-FLOOR DUCT SYSTEM

	UNHEATED FLOOR	WALL	FLAT ROOF
INSULATION VALUES	(2) R-11 OR / R-33 BIB	R-21	R-38
DAPIA PAGE	THP-3004	THP-560	THP-1409
U VALUE (BTUH/SQ.FT.-F)	0.039	0.0541	0.0281

Overhead Duct	
Diameter	Length
4	0
5	0
6	0
7	0
8	0
9	0
10	0
11	0
14	0
Exterior Supply	Length
14	0
16	0
Exterior Return	Length
14	0
16	0



Window Glass Area:

Th. Zone 1:
Th. Zone 2:
Th. Zone 3:
Overhead TZ 1:
Overhead TZ 2:
Overhead TZ 3:

	Area	U Value	UA
Doors:			
Front	21.00	0.300	6.30
Rear	21.00	0.300	6.30
Other Door	0.00	0.280	0.00
Other Door	0.00	0.330	0.00
OSB	0.00	0.000	0.00
Skylights	0.00	0.330	0.00
Standard	238.00	0.300	71.40
Option	0.00	0.300	0.00
Net:			
Floor	2280.00	0.039	88.69
Wall	1416.00	0.054	76.61
Ceiling	2280.00	0.0281	64.07
Ext. Duct	78.50	0.242	18.98
Ext. Duct	78.50	0.223	17.48
Ext. Duct	78.50	0.206	16.14
Supply	0.00	0.000	0.00
Supply	0.00	0.000	0.00
Supply	0.00	0.00	0.00

Energy Star v3 & ZERH Max Glass (sq ft)	
Th. Zone 1	700.0
Th. Zone 2	525.8
Th. Zone 3	299.4

	Outdoor Design Temp (F)	UA	U _o	Heatloss BTUH/F
Thermal Zone 1	11	332.35	0.052	480.80
Thermal Zone 2	0	330.85	0.052	479.20
Thermal Zone 3	-14	329.50	0.052	477.90

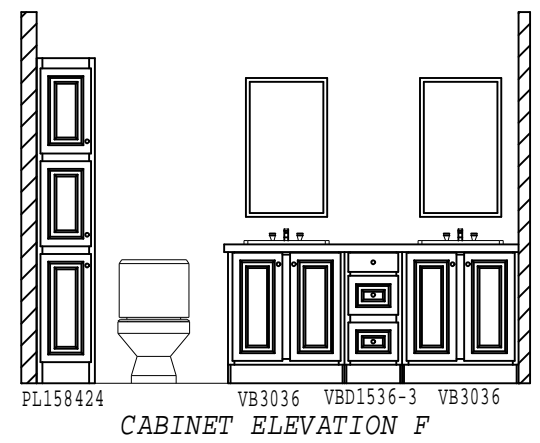
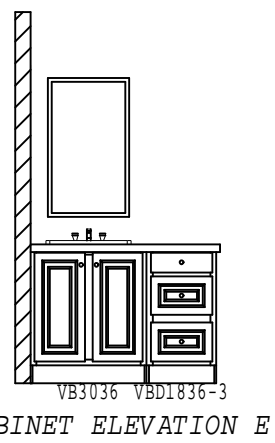
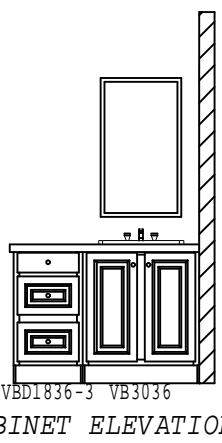
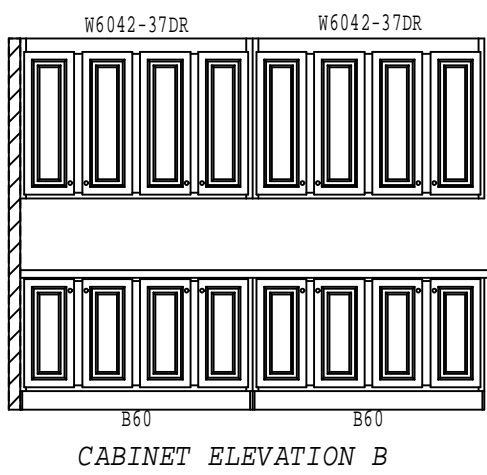
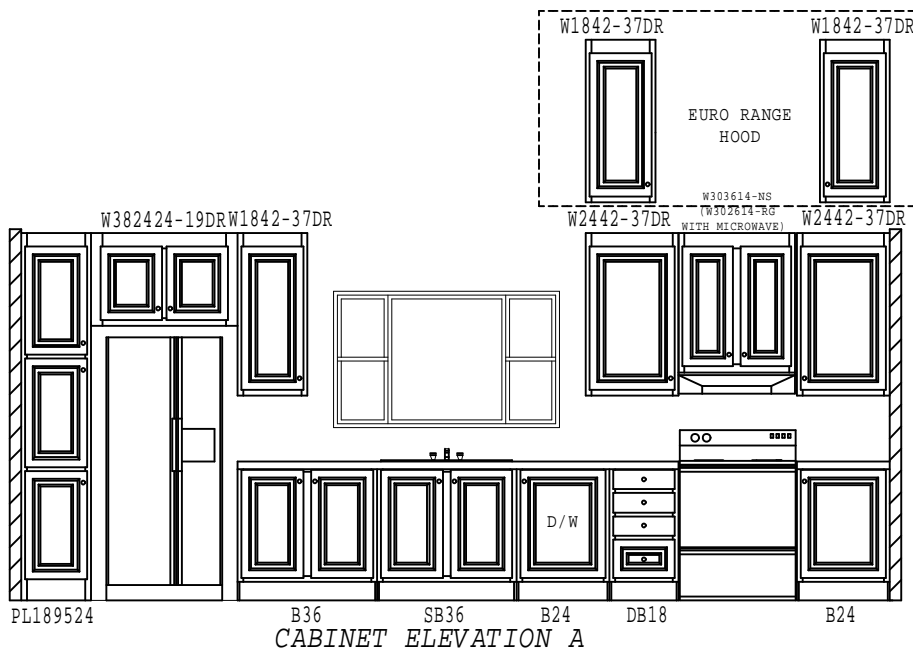
Design Temperatures

Furnace Heating Temp (F)	Economy Outdoor Temp (F)	
-1	20	10kW
-15	10	12kW
-36	-5	15kW
-13	12	40k Gas
-55	-17	60k Gas
-96	-46	80k Gas

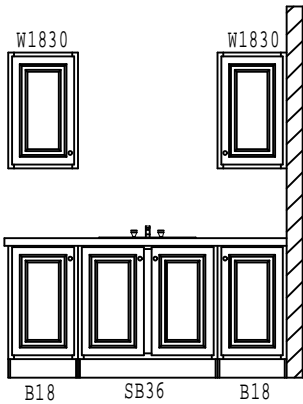
Thermal Zone	U-Value	Thermal Zone	U-Value	Thermal Zone	U-Value
Energy Star Version 2					
1-EHP-S	0.080	2-EHP-S	0.080	3-EHP-S	0.079
1-GAS-S	0.080	2-GAS-S	0.080	3-GAS-S	0.071
1-ENV-S	0.076	2-ENV-S	0.067	3-ENV-S	0.059
1-EHP-M	0.074	2-EHP-M	0.074	3-EHP-M	0.074
1-GAS-M	0.074	2-GAS-M	0.074	3-GAS-M	0.065
1-ENV-M	0.071	2-ENV-M	0.064	3-ENV-M	0.056

Energy Star Version 3 & ZERH					
1 Single	0.076	2 Single	0.065	3 Single	0.057
1 Double	0.070	2 Double	0.063	3 Double	0.054

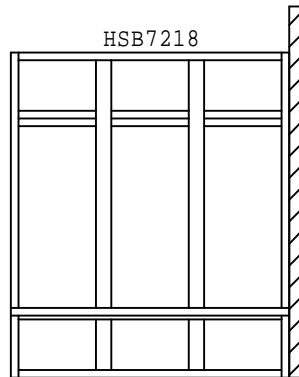
957-5430.4.6



BRAND CLAYTON	SERIES HR32	REVISIONS	BY	DATE	GENERAL NOTES CAB TRIM, MIRROR TRIM & MIRROR FASTENING PER SPECS	DRAWING TITLE CABINET ELEVATION-1	MODEL NAME 5430	SQ. FT. 2280		
CLAYTON HOME BUILDING GROUP							PLANT 957	DESCRIPTION 32X76 4BR-2BA	MODEL NO. 5430	
							DRAWN BY KLK	ORIG. DATE 05/10/2023	DATE PRINTED 07/28/2023	SHEET NO. 17-1



CABINET ELEVATION G
OPTIONAL UTILITY SINK



CABINET ELEVATION H
OPTIONAL COAT TREE IN UTILITY ROOM

BRAND CLAYTON	SERIES HR32	REVISIONS	BY	DATE	GENERAL NOTES CAB TRIM, MIRROR TRIM & MIRROR FASTENING PER SPECS	DRAWING TITLE CABINET ELEVATION-2	MODEL NAME 5430	SQ. FT. 2280		
CLAYTON HOME BUILDING GROUP							PLANT 957	DESCRIPTION 32X76 4BR-2BA	MODEL NO. 5430	
							DRAWN BY KLK	ORIG. DATE 05/10/2023	DATE PRINTED 07/28/2023	SHEET NO. 17-2