

PIPE LEGEND

1"	---
3/4"	---
1/2"	---

957-5420.1

BRAND CLAYTON	SERIES HR28	DRAWING TITLE SUPPLY PLUMBING		MODEL NAME 5420	SO. FT. 1896
		GENERAL NOTES HOSE BIBBS PER SPECS		PLANT DESCRIPTION 28X72 3BR-2BA	MODEL NO. 5420
REVISIONS		DATE	BY	DATE PRINTED 06/28/2023	SHEET NO. 9-1
DRAWN BY GDB		DATE 05/08/2023	DESCRIPTION 28X72 3BR-2BA	DATE PRINTED 06/28/2023	SHEET NO. 9-1

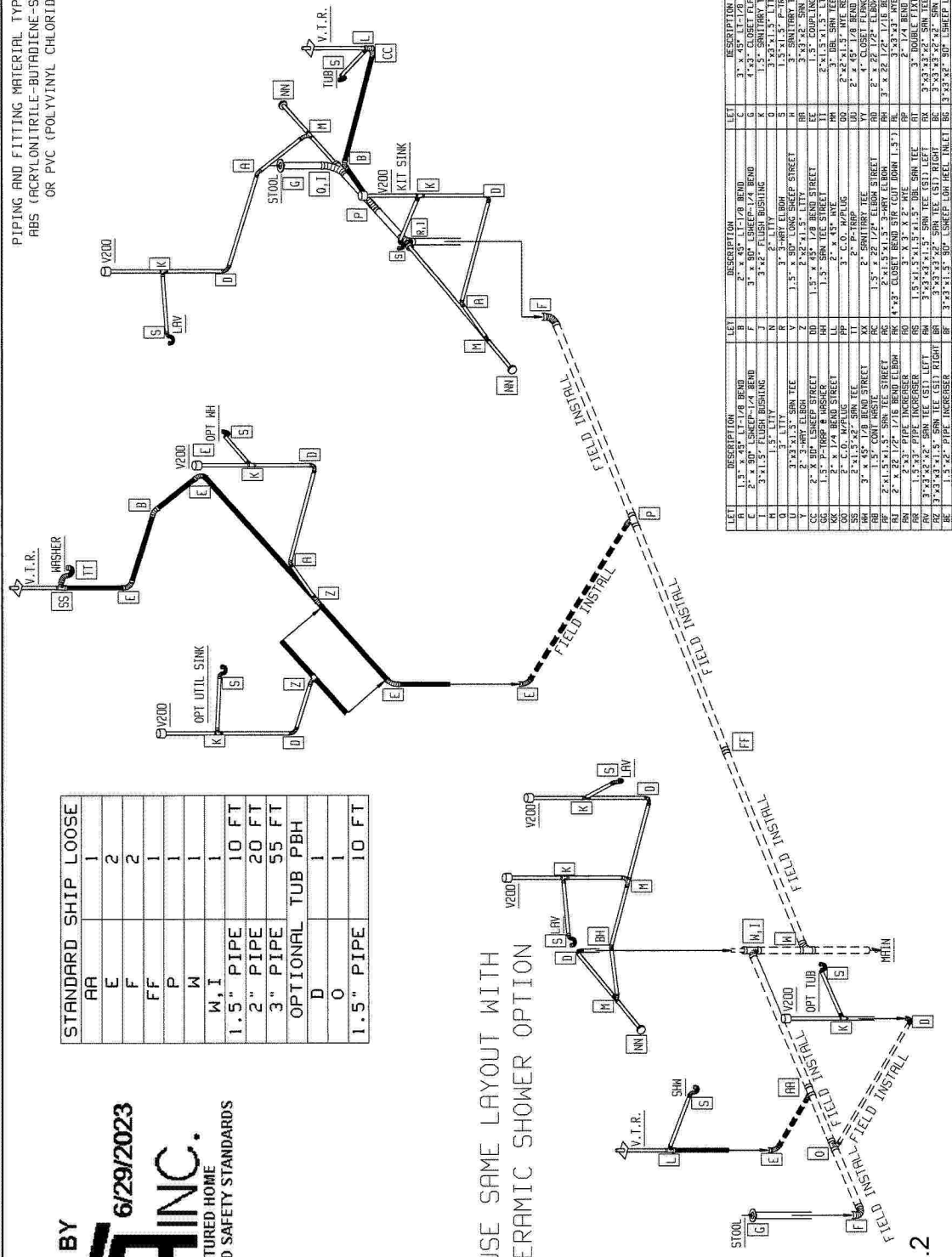
APPROVED BY
NTA INC.
 FEDERAL MANUFACTURED HOME
 CONSTRUCTION AND SAFETY STANDARDS

STANDARD	SHIP	LOOSE
AA	1	
E	2	
F	2	
FF	1	
P	1	
W	1	
W, I	1	
1.5" PIPE	10 FT	
2" PIPE	20 FT	
3" PIPE	55 FT	
OPTIONAL TUB PBH		
D	1	
O	1	
1.5" PIPE	10 FT	

PIPING AND FITTING MATERIAL TYPE TO BE:
 ABS (ACRYLONITRILE-BUTADIENE-STYRENE)
 OR PVC (POLYVINYL CHLORIDE)

PIPE LEGEND

1 1/2"
2"
3"



USE SAME LAYOUT WITH
 CERAMIC SHOWER OPTION

BRAND	CLAYTON	SERIES	HR28	GENERAL NOTES	REVISIONS	DATE	BY
				DWY SCHEMATIC			
				DESCRIPTION	28X72 3BR-2BR	5420	MODEL NO.
				PLANT	957	1896	MODEL NO.
				DATE PRINTED	06/28/2023		SHEET NO.
				DATE	05/08/2023		8-1
				DATE	06/28/2023		

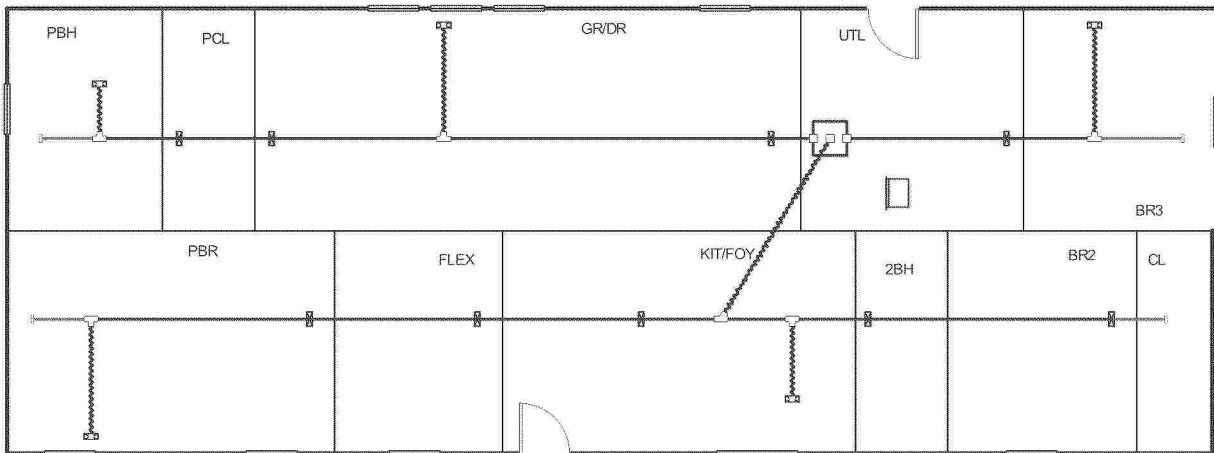
957-5420.2



APPROVED BY

NIA 6/29/2023
INC.
FEDERAL MANUFACTURED HOME
CONSTRUCTION AND SAFETY STANDARDS

Level 1



957-5420.4.1

Job #: 5420(I)
Performed by CLAYTON ROCKWELL for:
5420(I)
ROCKWELL, NC

Scale: 1 : 129
Page 1
Right-Suite@ Universal 2023
23.0.01 RSU28036
2023-Jun-27 07:43:25
...layton Homes\Desktop\5420(I).rup



Project Summary

Entire House

Job: 5420(I)
 Date: June 27, 2023
 By: CLAYTON ROCKWELL

Project Information

For: 5420(I), CLAYTON 957
 ROCKWELL, NC

Notes: DUCT COOLING CAPACITY = 26,000 BTU/HR



Design Information

Weather: Fort Bragg/Simmons, NC, US

Winter Design Conditions

Outside db 26 °F
 Inside db 70 °F
 Design TD 44 °F

Summer Design Conditions

Outside db 95 °F
 Inside db 75 °F
 Design TD 20 °F
 Daily range M
 Relative humidity 50 %
 Moisture difference 41 gr/lb

Heating Summary

Structure 18412 Btuh
 Ducts 0 Btuh
Central vent (90 cfm) **4338** Btuh
Outside air
 Humidification 0 Btuh
 Piping 0 Btuh
 Equipment load 22749 Btuh

Sensible Cooling Equipment Load Sizing

Structure 14248 Btuh
 Ducts 0 Btuh
Central vent (90 cfm) **1933** Btuh
Outside air
 Blower 0 Btuh
 Use manufacturer's data n
 Rate/swing multiplier 1.00
 Equipment sensible load 16133 Btuh

Infiltration

Method Simplified
 Construction quality Average
 Fireplaces 0

Latent Cooling Equipment Load Sizing

Structure 2191 Btuh
 Ducts 0 Btuh
Central vent (90 cfm) **2465** Btuh
Outside air
 Equipment latent load 4657 Btuh
Equipment Total Load (Sen+Lat) 20790 Btuh
 Req. total capacity at 0.70 SHR 1.9 ton

	Heating	Cooling
Area (ft ²)	1905	1905
Volume (ft ³)	15238	15238
Air changes/hour	0.38	0.20
Equiv. AVF (cfm)	97	51

Heating Equipment Summary

Make Smart Comfort
 Trade
 Model
 AHRI ref

Efficiency 100 EFF
 Heating input 10.0 kW
 Heating output 34121 Btuh
 Temperature rise 40 °F
 Actual air flow 780 cfm
 Air flow factor 0.042 cfm/Btuh
 Static pressure 0.30 in H2O
 Space thermostat

Cooling Equipment Summary

Make Smart Comfort
 Trade 15 SEER2 AC
 Cond R4A5S24*K*WAA*
 Coil FEVA0024**+NAVA43601CK
 AHRI ref 0
 Efficiency 13.0 EER2, 15.5 SEER2

Sensible cooling 16380 Btuh
 Latent cooling 7020 Btuh
 Total cooling 23400 Btuh
 Actual air flow 780 cfm
 Air flow factor 0.055 cfm/Btuh
 Static pressure 0.30 in H2O
 Load sensible heat ratio 0.78

957-5420.4.2

Bold/italic values have been manually overridden

Calculations approved by ACCA to meet all requirements of Manual J 8th Ed.



Right-Suite® Universal 2023 23.0.01 RSU28036

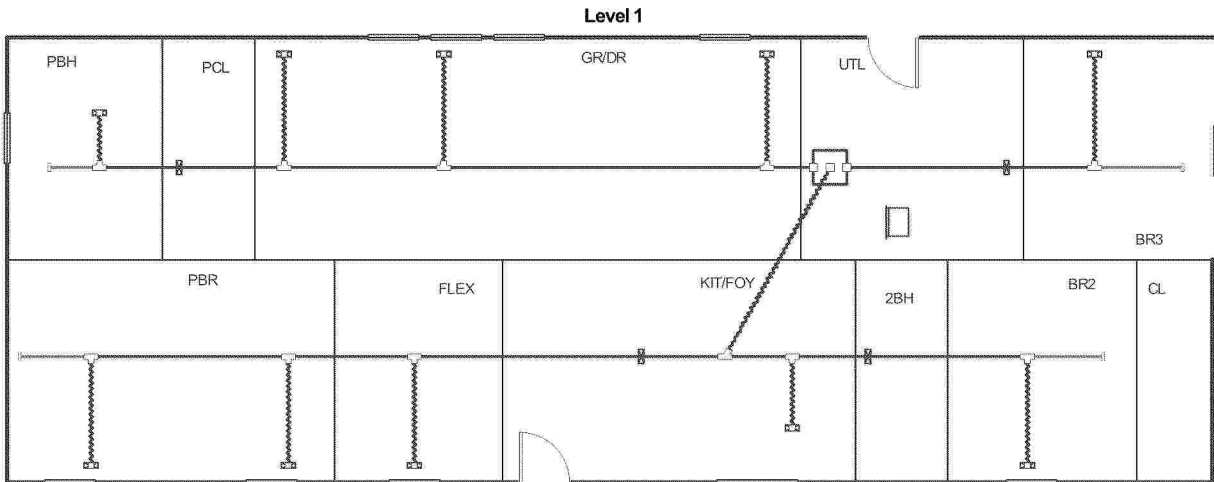
...ug\OneDrive - Clayton Homes\Desktop\5420(I).rup Calc = MJ8 Front Door.faces: N

2023-Jun-27 07:40:27

Page 1



APPROVED BY
NIA INC. 6/29/2023
FEDERAL MANUFACTURED HOME
CONSTRUCTION AND SAFETY STANDARDS



957-5420.4.3

Job #: 5420(P)
Performed by **CLAYTON ROCKWELL** for:
5420(P)
ROCKWELL, NC

Scale: 1 : 129
Page 1
Right-Suite® Universal 2023
23.0.01 RSU28036
2023-Jun-27 08:07:54
...layton Homes\Desktop\5420(P).rup



Project Summary

Entire House

Job: 5420(P)
 Date: June 27, 2023
 By: CLAYTON ROCKWELL

Project Information

For: 5420(P), CLAYTON 957
 ROCKWELL, NC

Notes: DUCT COOLING CAPACITY = 26,000 BTU/HR



Design Information

Weather: Fort Bragg/Simmons, NC, US

Winter Design Conditions

Outside db 26 °F
 Inside db 70 °F
 Design TD 44 °F

Summer Design Conditions

Outside db 95 °F
 Inside db 75 °F
 Design TD 20 °F
 Daily range M
 Relative humidity 50 %
 Moisture difference 41 gr/lb

Heating Summary

Structure 18412 Btuh
 Ducts 0 Btuh
Central vent (90 cfm) **4338** Btuh
Outside air
 Humidification 0 Btuh
 Piping 0 Btuh
 Equipment load 22749 Btuh

Sensible Cooling Equipment Load Sizing

Structure 14248 Btuh
 Ducts 0 Btuh
Central vent (90 cfm) **1933** Btuh
Outside air
 Blower 0 Btuh
 Use manufacturer's data n
 Rate/swing multiplier 1.00
 Equipment sensible load 16133 Btuh

Infiltration

Method Simplified
 Construction quality Average
 Fireplaces 0

Latent Cooling Equipment Load Sizing

Structure 2191 Btuh
 Ducts 0 Btuh
Central vent (90 cfm) **2465** Btuh
Outside air
 Equipment latent load 4657 Btuh
Equipment Total Load (Sen+Lat) 20790 Btuh
 Req. total capacity at 0.70 SHR 1.9 ton

	Heating	Cooling
Area (ft ²)	1905	1905
Volume (ft ³)	15238	15238
Air changes/hour	0.38	0.20
Equiv. AVF (cfm)	97	51

Heating Equipment Summary

Make Smart Comfort
 Trade
 Model
 AHRI ref

Efficiency 100 EFF
 Heating input 10.0 kW
 Heating output 34121 Btuh
 Temperature rise 40 °F
 Actual air flow 780 cfm
 Air flow factor 0.042 cfm/Btuh
 Static pressure 0.30 in H2O
 Space thermostat

Cooling Equipment Summary

Make Smart Comfort
 Trade 15 SEER2 AC
 Cond R4A5S24*K*WAA*
 Coil FEVA0024**+NAVA43601CK
 AHRI ref 0
 Efficiency 13.0 EER2, 15.5 SEER2

Sensible cooling 16380 Btuh
 Latent cooling 7020 Btuh
 Total cooling 23400 Btuh
 Actual air flow 780 cfm
 Air flow factor 0.055 cfm/Btuh
 Static pressure 0.30 in H2O
 Load sensible heat ratio 0.78

957-5420.4.4

Bold/italic values have been manually overridden

Calculations approved by ACCA to meet all requirements of Manual J 8th Ed.





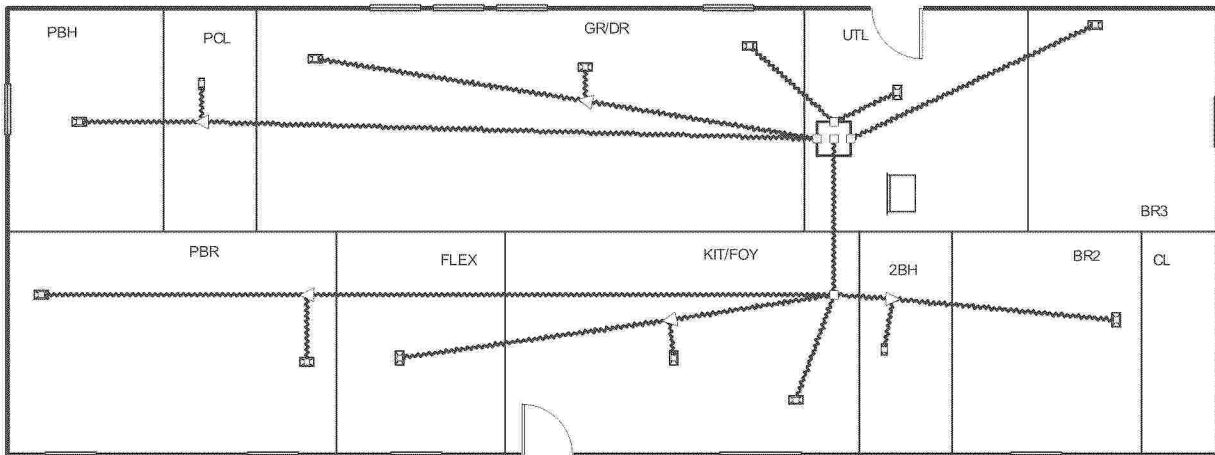
APPROVED BY



6/29/2023

FEDERAL MANUFACTURED HOME
CONSTRUCTION AND SAFETY STANDARDS

Level 1



957-5420.4.5

Job #: 5420(OH_HVAC)
Performed by CLAYTON ROCKWELL for:
5420(OH_HVAC)
ROCKWELL, NC

Scale: 1 : 129
Page 1
Right-Suite® Universal 2023
23.0.01 RSU28036
2023-Jun-28 13:51:30
... Homes\Desktop\5420(OH_HVAC).r...



Project Summary

Entire House

Job: 5420(OH_HVAC)
 Date: June 27, 2023
 By: CLAYTON ROCKWELL

Project Information

For: 5420(OH_HVAC), CLAYTON 957 ROCKWELL, NC
 Notes: DUCT COOLING CAPACITY = 36,666 BTU/HR



Design Information

Weather: Fort Bragg/Simmons, NC, US

Winter Design Conditions

Outside db 26 °F
 Inside db 70 °F
 Design TD 44 °F

Summer Design Conditions

Outside db 95 °F
 Inside db 75 °F
 Design TD 20 °F
 Daily range M
 Relative humidity 50 %
 Moisture difference 41 gr/lb

Heating Summary

Structure 18379 Btuh
 Ducts 6374 Btuh
Central vent (90 cfm) 4338 Btuh
Outside air
 Humidification 0 Btuh
 Piping 0 Btuh
 Equipment load 29090 Btuh

Sensible Cooling Equipment Load Sizing

Structure 15638 Btuh
 Ducts 5853 Btuh
Central vent (90 cfm) 1933 Btuh
Outside air
 Blower 0 Btuh
 Use manufacturer's data n
 Rate/swing multiplier 1.00
 Equipment sensible load 23354 Btuh

Infiltration

Method Simplified
 Construction quality Average
 Fireplaces 0

Latent Cooling Equipment Load Sizing

Structure 2189 Btuh
 Ducts 1208 Btuh
Central vent (90 cfm) 2465 Btuh
Outside air
 Equipment latent load 5862 Btuh

	Heating	Cooling
Area (ft ²)	1901	1901
Volume (ft ³)	15211	15211
Air changes/hour	0.38	0.20
Equiv. AVF (cfm)	96	51

Equipment Total Load (Sen+Lat) 29216 Btuh
 Req. total capacity at 0.70 SHR 2.8 ton

Heating Equipment Summary

Make Smart Comfort
 Trade
 Model
 AHRI ref
 Efficiency 100 EFF
 Heating input 12.0 kW
 Heating output 40946 Btuh
 Temperature rise 34 °F
 Actual air flow 1100 cfm
 Air flow factor 0.044 cfm/Btuh
 Static pressure 0.30 in H2O
 Space thermostat

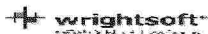
Cooling Equipment Summary

Make Smart Comfort
 Trade 15 SEER2 AC
 Cond R4A5S36*K*WAA*
 Coil FEVA0036**+NAVA43601CK
 AHRI ref 0
 Efficiency 12.5 EER2, 15.2 SEER2
 Sensible cooling 23100 Btuh
 Latent cooling 9900 Btuh
 Total cooling 33000 Btuh
 Actual air flow 1100 cfm
 Air flow factor 0.051 cfm/Btuh
 Static pressure 0.30 in H2O
 Load sensible heat ratio 0.80

957-5420.4.6

Bold/italic values have been manually overridden

Calculations approved by ACCA to meet all requirements of Manual J 8th Ed.



Right-Suite® Universal 2023 23.0.01 RSU28036

2023-Jun-28 13:51:12

...Drive - Clayton Homes\Desktop\5420(OH_HVAC).rup Calc = MJ8 Front Door faces: N

Page 1