

57 56 55 54 53 52 51 50 49 48 47 46 45 44 43 42 41 40 39 38 37 36 35 34 33 32 31 30 29 28 27 26 25 24 23 22 21 20 19 18 17 16 15 14 13 12 11 10 9 8 7 6 5 4 3 2 1 0

R-SECTION HITCH END

957-5404.0

<p>INDICATES REQUIRED NUMBER OF STUDS IN COLUMN</p> <p>THE * SPECIFIES THAT THERE CAN BE NO HOLES IN STUDS IN COLUMNS</p>			<p>RETURN AIR REQUIREMENTS</p> <p>① 20"x16" GRILL REQUIRED</p> <p>② 4"x10" GRILL w/ 2 1/2" DOOR UNDERCUT</p> <p>③ DOOR(S) MUST BE UNDERCUT 2 1/2" MIN.</p> <p>④ 4"x24" OR 6"x14" GRILL REQUIRED</p>			<p>SO. FT.</p> <p>1140</p>		
<p>MODEL NO.</p> <p>5404</p>			<p>PLANT DESCRIPTION</p> <p>16X76 3BR-2BR</p>			<p>MODEL NO.</p> <p>5404</p>		
<p>DATE PRINTED</p> <p>05/18/2023</p>			<p>DATE</p> <p>10/04/2023</p>			<p>SHEET NO.</p> <p>1-1</p>		
<p>DRAWN BY</p> <p>GDB</p>			<p>DATE</p> <p>05/18/2023</p>			<p>DATE PRINTED</p> <p>10/04/2023</p>		
<p>INDICATES REQUIRED NUMBER OF STUDS IN COLUMN</p> <p>THE * SPECIFIES THAT THERE CAN BE NO HOLES IN STUDS IN COLUMNS</p>			<p>RETURN AIR REQUIREMENTS</p> <p>① 20"x16" GRILL REQUIRED</p> <p>② 4"x10" GRILL w/ 2 1/2" DOOR UNDERCUT</p> <p>③ DOOR(S) MUST BE UNDERCUT 2 1/2" MIN.</p> <p>④ 4"x24" OR 6"x14" GRILL REQUIRED</p>			<p>SO. FT.</p> <p>1140</p>		
<p>MODEL NO.</p> <p>5404</p>			<p>PLANT DESCRIPTION</p> <p>16X76 3BR-2BR</p>			<p>MODEL NO.</p> <p>5404</p>		
<p>DATE PRINTED</p> <p>05/18/2023</p>			<p>DATE</p> <p>10/04/2023</p>			<p>SHEET NO.</p> <p>1-1</p>		
<p>DRAWN BY</p> <p>GDB</p>			<p>DATE</p> <p>05/18/2023</p>			<p>DATE PRINTED</p> <p>10/04/2023</p>		
<p>INDICATES REQUIRED NUMBER OF STUDS IN COLUMN</p> <p>THE * SPECIFIES THAT THERE CAN BE NO HOLES IN STUDS IN COLUMNS</p>			<p>RETURN AIR REQUIREMENTS</p> <p>① 20"x16" GRILL REQUIRED</p> <p>② 4"x10" GRILL w/ 2 1/2" DOOR UNDERCUT</p> <p>③ DOOR(S) MUST BE UNDERCUT 2 1/2" MIN.</p> <p>④ 4"x24" OR 6"x14" GRILL REQUIRED</p>			<p>SO. FT.</p> <p>1140</p>		
<p>MODEL NO.</p> <p>5404</p>			<p>PLANT DESCRIPTION</p> <p>16X76 3BR-2BR</p>			<p>MODEL NO.</p> <p>5404</p>		
<p>DATE PRINTED</p> <p>05/18/2023</p>			<p>DATE</p> <p>10/04/2023</p>			<p>SHEET NO.</p> <p>1-1</p>		
<p>DRAWN BY</p> <p>GDB</p>			<p>DATE</p> <p>05/18/2023</p>			<p>DATE PRINTED</p> <p>10/04/2023</p>		
<p>INDICATES REQUIRED NUMBER OF STUDS IN COLUMN</p> <p>THE * SPECIFIES THAT THERE CAN BE NO HOLES IN STUDS IN COLUMNS</p>			<p>RETURN AIR REQUIREMENTS</p> <p>① 20"x16" GRILL REQUIRED</p> <p>② 4"x10" GRILL w/ 2 1/2" DOOR UNDERCUT</p> <p>③ DOOR(S) MUST BE UNDERCUT 2 1/2" MIN.</p> <p>④ 4"x24" OR 6"x14" GRILL REQUIRED</p>			<p>SO. FT.</p> <p>1140</p>		
<p>MODEL NO.</p> <p>5404</p>			<p>PLANT DESCRIPTION</p> <p>16X76 3BR-2BR</p>			<p>MODEL NO.</p> <p>5404</p>		
<p>DATE PRINTED</p> <p>05/18/2023</p>			<p>DATE</p> <p>10/04/2023</p>			<p>SHEET NO.</p> <p>1-1</p>		
<p>DRAWN BY</p> <p>GDB</p>			<p>DATE</p> <p>05/18/2023</p>			<p>DATE PRINTED</p> <p>10/04/2023</p>		
<p>INDICATES REQUIRED NUMBER OF STUDS IN COLUMN</p> <p>THE * SPECIFIES THAT THERE CAN BE NO HOLES IN STUDS IN COLUMNS</p>			<p>RETURN AIR REQUIREMENTS</p> <p>① 20"x16" GRILL REQUIRED</p> <p>② 4"x10" GRILL w/ 2 1/2" DOOR UNDERCUT</p> <p>③ DOOR(S) MUST BE UNDERCUT 2 1/2" MIN.</p> <p>④ 4"x24" OR 6"x14" GRILL REQUIRED</p>			<p>SO. FT.</p> <p>1140</p>		
<p>MODEL NO.</p> <p>5404</p>			<p>PLANT DESCRIPTION</p> <p>16X76 3BR-2BR</p>			<p>MODEL NO.</p> <p>5404</p>		
<p>DATE PRINTED</p> <p>05/18/2023</p>			<p>DATE</p> <p>10/04/2023</p>			<p>SHEET NO.</p> <p>1-1</p>		
<p>DRAWN BY</p> <p>GDB</p>			<p>DATE</p> <p>05/18/2023</p>			<p>DATE PRINTED</p> <p>10/04/2023</p>		
<p>INDICATES REQUIRED NUMBER OF STUDS IN COLUMN</p> <p>THE * SPECIFIES THAT THERE CAN BE NO HOLES IN STUDS IN COLUMNS</p>			<p>RETURN AIR REQUIREMENTS</p> <p>① 20"x16" GRILL REQUIRED</p> <p>② 4"x10" GRILL w/ 2 1/2" DOOR UNDERCUT</p> <p>③ DOOR(S) MUST BE UNDERCUT 2 1/2" MIN.</p> <p>④ 4"x24" OR 6"x14" GRILL REQUIRED</p>			<p>SO. FT.</p> <p>1140</p>		
<p>MODEL NO.</p> <p>5404</p>			<p>PLANT DESCRIPTION</p> <p>16X76 3BR-2BR</p>			<p>MODEL NO.</p> <p>5404</p>		
<p>DATE PRINTED</p> <p>05/18/2023</p>			<p>DATE</p> <p>10/04/2023</p>			<p>SHEET NO.</p> <p>1-1</p>		
<p>DRAWN BY</p> <p>GDB</p>			<p>DATE</p> <p>05/18/2023</p>			<p>DATE PRINTED</p> <p>10/04/2023</p>		

MASTER PLAN

DRAWING TITLE

GENERAL NOTES

- CEILING HEIGHT = 96.00
- REFER TO DRAWING PAGE MP-2.0 FOR AREA LIGHT & VENT
- REFER TO DRAWING PAGE EL-1.2 FOR ELEC. SYMBOL & BRANCH CIRCUIT NUMBER
- FLOOR FRAMING SPACING = 16"
- TOTAL WINDOW SFT = 1347/41 WITH GLAZIOPR OPT

BY	DATE	REVISIONS

BRAND

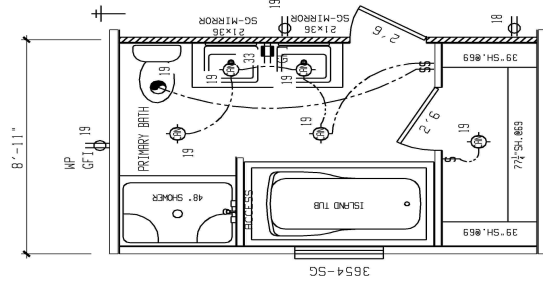
CLAYTON

SERIES

HR16

CLAYTON HOME BUILDING GROUP

GLAMOUR BATH OPTION



57 58 59 60 61 62 63 64 65 66 67 68 69 70 71 72 73 74 75 76 77 78 79 80 81 82 83 84 85 86 87 88 89 90 91 92 93 94 95 96 97 98 99 100 101 102 103 104 105 106 107 108 109 110 111 112 113 114 115 116 117 118 119 120 121 122 123 124 125 126 127 128 129 130 131 132 133 134 135 136 137 138 139 140 141 142 143 144 145 146 147 148 149 150 151 152 153 154 155 156 157 158 159 160 161 162 163 164 165 166 167 168 169 170 171 172 173 174 175 176 177 178 179 180 181 182 183 184 185 186 187 188 189 190 191 192 193 194 195 196 197 198 199 200

957-5404.0.1

REV. NO.	DESCRIPTION	DATE	BY		DATE		REVISIONS		INDICATES REQUIRED NUMBER OF STUDS IN COLUMN	THE * SPECIFICS THAT THERE CAN BE NO HOLES IN STUDS IN COLUMNS
			DATE	NAME	DATE	NAME	NO.	DESCRIPTION		
1	20'x16" GRILL REQUIRED								1	20'x16" GRILL REQUIRED
2	4'x10" GRILL W/ 2 1/2" DOOR UNDERCUT								2	4'x10" GRILL W/ 2 1/2" DOOR UNDERCUT
3	DOORS MUST BE UNDERCUT 2 1/2" MIN.								3	DOORS MUST BE UNDERCUT 2 1/2" MIN.
4	4'x24" OR 6'x14" GRILL REQUIRED								4	4'x24" OR 6'x14" GRILL REQUIRED

GENERAL NOTES			DRAWING TITLE		
CEILING HEIGHT = 96.00			MASTER PLAN #2		
REFER TO DRAWING PAGE MP-2.0 FOR AREA LIGHT & VENT					
REFER TO DRAWING PAGE EL-1.2 FOR ELEC. SYMBOL & BRANCH CIRCUIT NUMBER					

REVISIONS		BY		DATE	

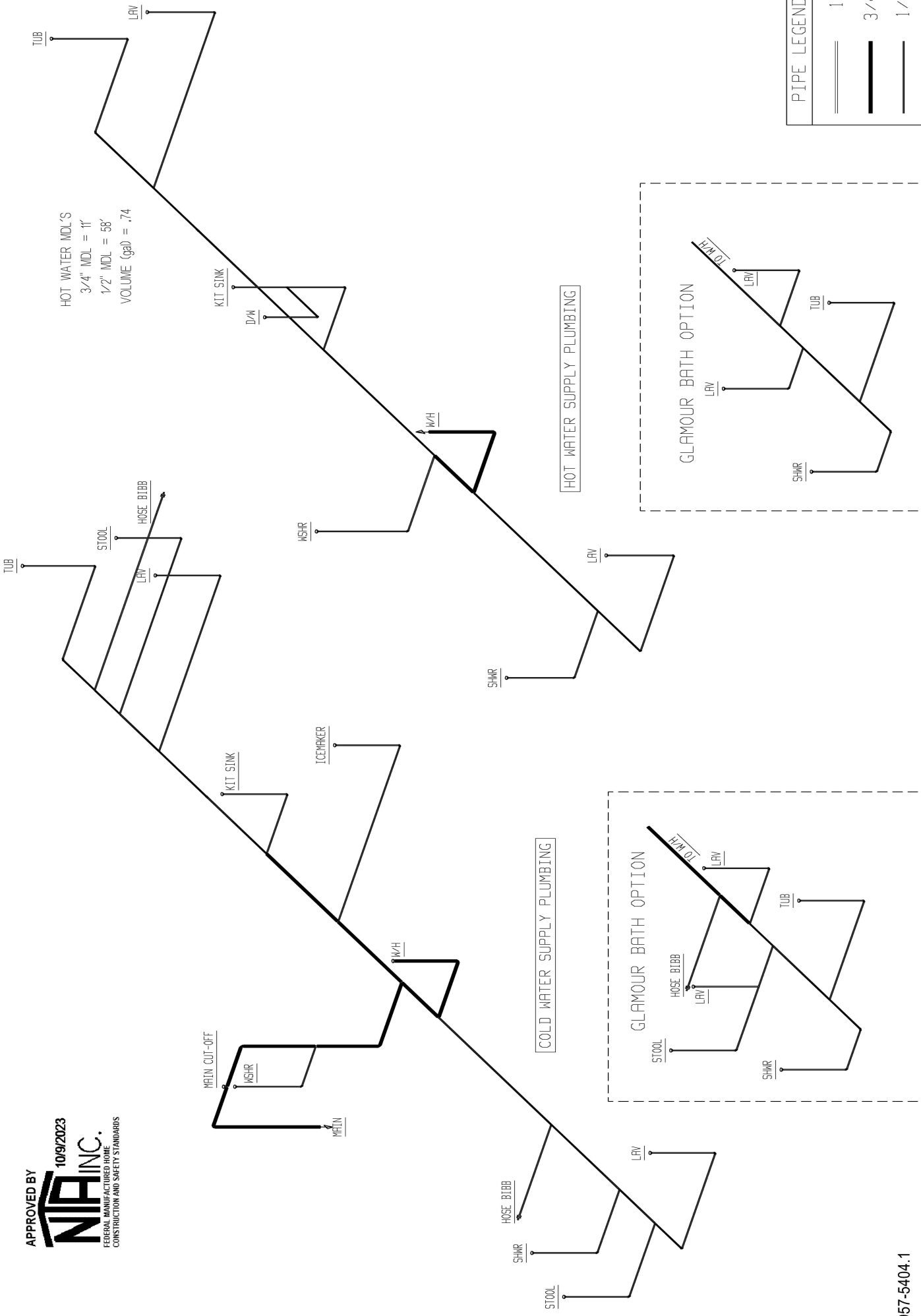
BRAND	SERIES	HR16	MODEL NO.	SO. FT.
CLAYTON			5404	1140

PLANT	DESCRIPTION	DATE PRINTED	SHEET NO.
957	16X76 JBR-2BA	10/05/2023	5404

DRAWN BY	DATE	DATE PRINTED	SHEET NO.
GDB	05/18/2023	10/05/2023	1-2



HOT WATER MDL'S
 3/4" MDL = 11'
 1/2" MDL = 58'
 VOLUME (gal) = .74



COLD WATER SUPPLY PLUMBING

HOT WATER SUPPLY PLUMBING

GLAMOUR BATH OPTION

GLAMOUR BATH OPTION

PIPE LEGEND

1"	---
3/4"	---
1/2"	---

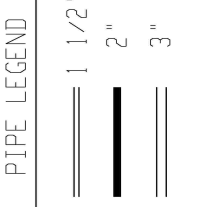
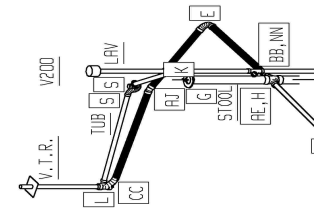
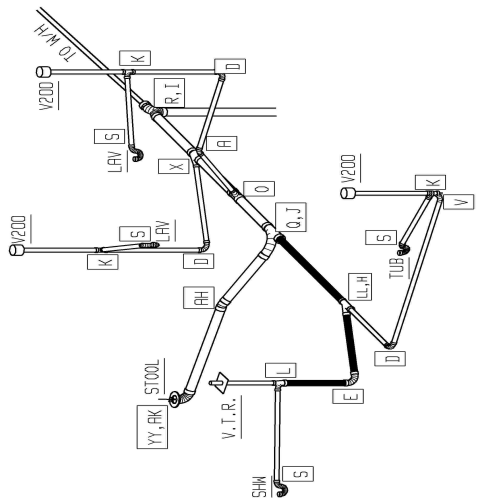
957-5404.1

BRAND CLAYTON	SERIES HR16	DRAWING TITLE SUPPLY PLUMBING		MODEL NAME 5404	SO. FT. 1140
		GENERAL NOTES HOSE BIBBS PER SPECS		PLANT 957	MODEL NO. 5404
		REVISIONS	DESCRIPTION 16X76 3BR-2BR	DATE PRINTED 10/04/2023	SHEET NO. 9-1
		BY	DATE	DRAWN BY GDB	ORIG. DATE 05/18/2023

CLAYTON HOME BUILDING GROUP

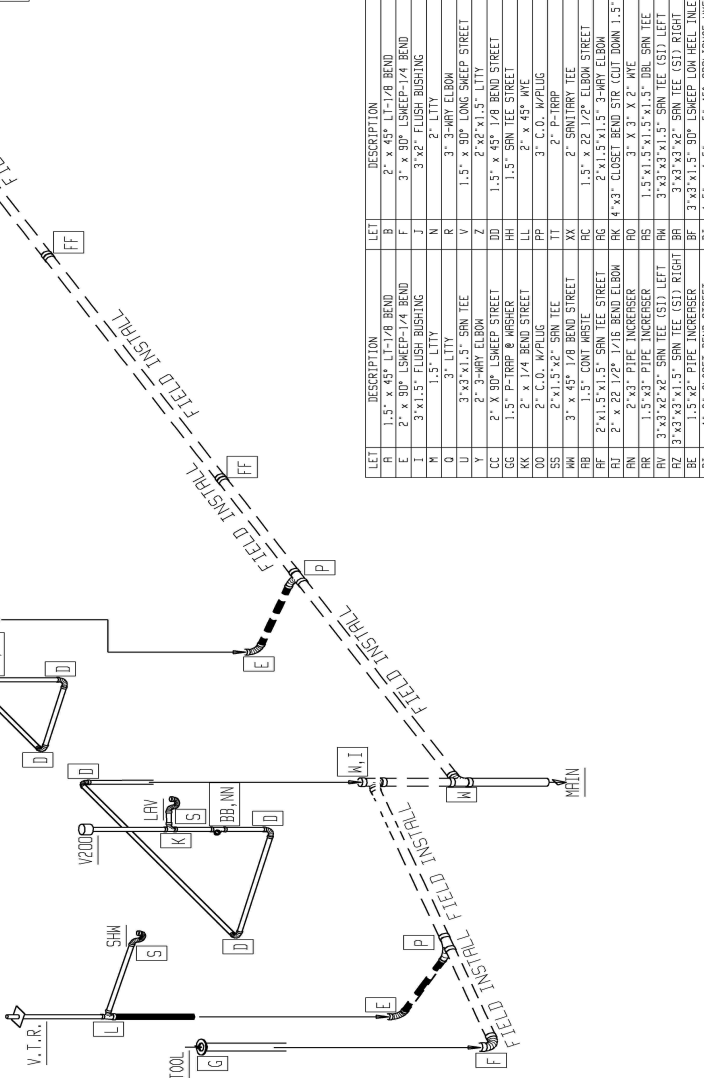
GLAMOUR BATH OPTION

APPROVED BY
NIA INC.
 FEDERAL MANUFACTURED HOME
 CONSTRUCTION AND SAFETY STANDARDS



PIPING AND FITTING MATERIAL TYPE TO BE:
 ABS (ACRYLONITRILE-BUTADIENE-STYRENE)
 OR PVC (POLYVINYL CHLORIDE)

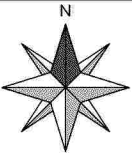
STANDARD SHIP LOOSE	
E	2
F	2
FF	2
P	2
W, I	1
2" PIPE	5 FT
3" PIPE	75 FT



957-5404.2

BRAND		SERIES		DRAWING TITLE		GENERAL NOTES		REVISIONS		BY DATE	
CLAYTON	HR16	5404		DWY SCHEMATIC							
MODEL NAME		MODEL NO.		PLANT DESCRIPTION		PLANT		DATE PRINTED		SHEET NO.	
5404		5404		16X76 3BR-2BA		957		10/05/2023		8-1	
DRAWN BY		DATE		DATE PRINTED		DATE		DATE		DATE	
GDB		05/18/2023		10/05/2023		10/05/2023		10/05/2023		10/05/2023	
SO. FT.		1140		5404		5404		5404		5404	

LET	DESCRIPTION	LET	DESCRIPTION	LET	DESCRIPTION
C	3" x 45° 1/4" BEND	D	1.5" x 1.5" x 90° LONG SWEEP 1/4" BEND	H	4" x 1.5" x 90° LONG SWEEP 1/4" BEND
E	2" x 45° 1/4" BEND	G	4" x 1.5" x 90° LONG SWEEP 1/4" BEND	I	3" x 1.5" x 90° LONG SWEEP 1/4" BEND
F	2" x 45° 1/4" BEND	J	3" x 1.5" x 90° LONG SWEEP 1/4" BEND	K	3" x 1.5" x 90° LONG SWEEP 1/4" BEND
G	2" x 45° 1/4" BEND	L	3" x 1.5" x 90° LONG SWEEP 1/4" BEND	M	3" x 1.5" x 90° LONG SWEEP 1/4" BEND
H	2" x 45° 1/4" BEND	N	3" x 1.5" x 90° LONG SWEEP 1/4" BEND	O	3" x 1.5" x 90° LONG SWEEP 1/4" BEND
I	3" x 1.5" x 90° LONG SWEEP 1/4" BEND	P	3" x 1.5" x 90° LONG SWEEP 1/4" BEND	Q	3" x 1.5" x 90° LONG SWEEP 1/4" BEND
J	3" x 1.5" x 90° LONG SWEEP 1/4" BEND	R	3" x 1.5" x 90° LONG SWEEP 1/4" BEND	S	3" x 1.5" x 90° LONG SWEEP 1/4" BEND
K	3" x 1.5" x 90° LONG SWEEP 1/4" BEND	T	3" x 1.5" x 90° LONG SWEEP 1/4" BEND	U	3" x 1.5" x 90° LONG SWEEP 1/4" BEND
L	3" x 1.5" x 90° LONG SWEEP 1/4" BEND	V	3" x 1.5" x 90° LONG SWEEP 1/4" BEND	W	3" x 1.5" x 90° LONG SWEEP 1/4" BEND
M	3" x 1.5" x 90° LONG SWEEP 1/4" BEND	X	3" x 1.5" x 90° LONG SWEEP 1/4" BEND	Y	3" x 1.5" x 90° LONG SWEEP 1/4" BEND
N	3" x 1.5" x 90° LONG SWEEP 1/4" BEND	Z	3" x 1.5" x 90° LONG SWEEP 1/4" BEND	AA	3" x 1.5" x 90° LONG SWEEP 1/4" BEND
O	3" x 1.5" x 90° LONG SWEEP 1/4" BEND	AB	3" x 1.5" x 90° LONG SWEEP 1/4" BEND	AC	3" x 1.5" x 90° LONG SWEEP 1/4" BEND
P	3" x 1.5" x 90° LONG SWEEP 1/4" BEND	AD	3" x 1.5" x 90° LONG SWEEP 1/4" BEND	AE	3" x 1.5" x 90° LONG SWEEP 1/4" BEND
Q	3" x 1.5" x 90° LONG SWEEP 1/4" BEND	AF	3" x 1.5" x 90° LONG SWEEP 1/4" BEND	AG	3" x 1.5" x 90° LONG SWEEP 1/4" BEND
R	3" x 1.5" x 90° LONG SWEEP 1/4" BEND	AH	3" x 1.5" x 90° LONG SWEEP 1/4" BEND	AI	3" x 1.5" x 90° LONG SWEEP 1/4" BEND
S	3" x 1.5" x 90° LONG SWEEP 1/4" BEND	AJ	3" x 1.5" x 90° LONG SWEEP 1/4" BEND	AK	3" x 1.5" x 90° LONG SWEEP 1/4" BEND
T	3" x 1.5" x 90° LONG SWEEP 1/4" BEND	AL	3" x 1.5" x 90° LONG SWEEP 1/4" BEND	AM	3" x 1.5" x 90° LONG SWEEP 1/4" BEND
U	3" x 1.5" x 90° LONG SWEEP 1/4" BEND	AN	3" x 1.5" x 90° LONG SWEEP 1/4" BEND	AO	3" x 1.5" x 90° LONG SWEEP 1/4" BEND
V	3" x 1.5" x 90° LONG SWEEP 1/4" BEND	AP	3" x 1.5" x 90° LONG SWEEP 1/4" BEND	AQ	3" x 1.5" x 90° LONG SWEEP 1/4" BEND
W	3" x 1.5" x 90° LONG SWEEP 1/4" BEND	AR	3" x 1.5" x 90° LONG SWEEP 1/4" BEND	AS	3" x 1.5" x 90° LONG SWEEP 1/4" BEND
X	3" x 1.5" x 90° LONG SWEEP 1/4" BEND	AT	3" x 1.5" x 90° LONG SWEEP 1/4" BEND	AV	3" x 1.5" x 90° LONG SWEEP 1/4" BEND
Y	3" x 1.5" x 90° LONG SWEEP 1/4" BEND	AU	3" x 1.5" x 90° LONG SWEEP 1/4" BEND	AW	3" x 1.5" x 90° LONG SWEEP 1/4" BEND
Z	3" x 1.5" x 90° LONG SWEEP 1/4" BEND	AX	3" x 1.5" x 90° LONG SWEEP 1/4" BEND	AY	3" x 1.5" x 90° LONG SWEEP 1/4" BEND
AA	3" x 1.5" x 90° LONG SWEEP 1/4" BEND	BA	3" x 1.5" x 90° LONG SWEEP 1/4" BEND	BB	3" x 1.5" x 90° LONG SWEEP 1/4" BEND
AB	3" x 1.5" x 90° LONG SWEEP 1/4" BEND	BB	3" x 1.5" x 90° LONG SWEEP 1/4" BEND	BC	3" x 1.5" x 90° LONG SWEEP 1/4" BEND
AC	3" x 1.5" x 90° LONG SWEEP 1/4" BEND	BC	3" x 1.5" x 90° LONG SWEEP 1/4" BEND	BD	3" x 1.5" x 90° LONG SWEEP 1/4" BEND
AD	3" x 1.5" x 90° LONG SWEEP 1/4" BEND	BD	3" x 1.5" x 90° LONG SWEEP 1/4" BEND	BE	3" x 1.5" x 90° LONG SWEEP 1/4" BEND
AE	3" x 1.5" x 90° LONG SWEEP 1/4" BEND	BE	3" x 1.5" x 90° LONG SWEEP 1/4" BEND	BF	3" x 1.5" x 90° LONG SWEEP 1/4" BEND
AF	3" x 1.5" x 90° LONG SWEEP 1/4" BEND	BF	3" x 1.5" x 90° LONG SWEEP 1/4" BEND	BG	3" x 1.5" x 90° LONG SWEEP 1/4" BEND
AG	3" x 1.5" x 90° LONG SWEEP 1/4" BEND	BG	3" x 1.5" x 90° LONG SWEEP 1/4" BEND	BH	3" x 1.5" x 90° LONG SWEEP 1/4" BEND
AH	3" x 1.5" x 90° LONG SWEEP 1/4" BEND	BH	3" x 1.5" x 90° LONG SWEEP 1/4" BEND	BI	3" x 1.5" x 90° LONG SWEEP 1/4" BEND
AI	3" x 1.5" x 90° LONG SWEEP 1/4" BEND	BI	3" x 1.5" x 90° LONG SWEEP 1/4" BEND	BJ	3" x 1.5" x 90° LONG SWEEP 1/4" BEND
AJ	3" x 1.5" x 90° LONG SWEEP 1/4" BEND	BJ	3" x 1.5" x 90° LONG SWEEP 1/4" BEND	BK	3" x 1.5" x 90° LONG SWEEP 1/4" BEND
AK	3" x 1.5" x 90° LONG SWEEP 1/4" BEND	BK	3" x 1.5" x 90° LONG SWEEP 1/4" BEND	BL	3" x 1.5" x 90° LONG SWEEP 1/4" BEND
AL	3" x 1.5" x 90° LONG SWEEP 1/4" BEND	BL	3" x 1.5" x 90° LONG SWEEP 1/4" BEND		

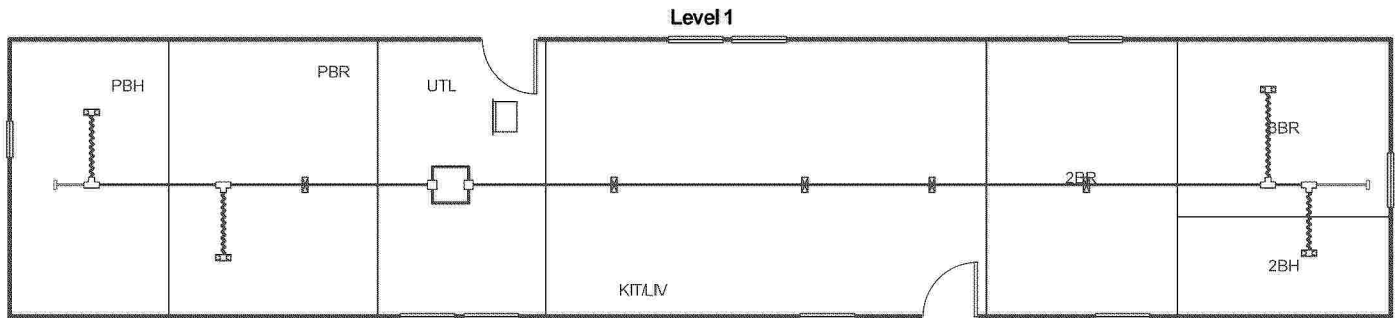


APPROVED BY



10/9/2023

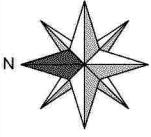
FEDERAL MANUFACTURED HOME
CONSTRUCTION AND SAFETY STANDARDS



957-5404.4.1

Job #: 5404(I)
Performed by **CLAYTON ROCKWELL** for:
5404(I)
ROCKWELL, NC

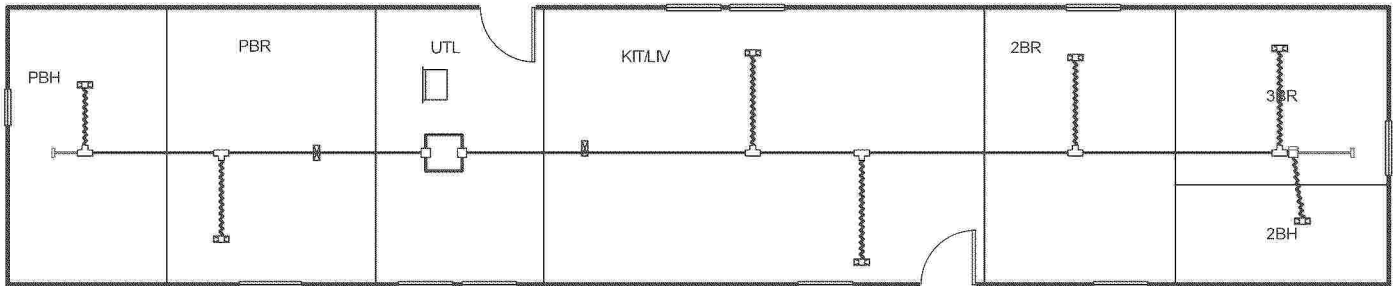
Scale: 1 : 127
Page 1
Right-Suite® Universal 2023
23.0.03 RSU61395
2023-Oct-03 14:25:24
...layton Homes\Desktop\5404(P).rup



APPROVED BY



Level 1



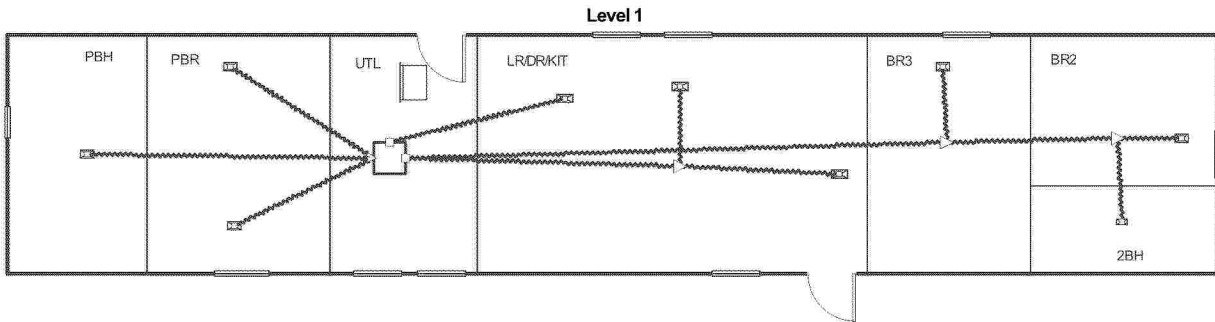
957-5404.4.3

Job #: 5404(P)
Performed by **CLAYTON ROCKWELL** for:
5404(P)
ROCKWELL, NC

Scale: 1 : 127
Page 1
Right-Suite® Universal 2023
23.0.03 RSU61395
2023-Oct-03 14:49:35
...on Homes\Desktop\5404(P) (2).rup



APPROVED BY
NIA INC. 10/9/2023
FEDERAL MANUFACTURED HOME
CONSTRUCTION AND SAFETY STANDARDS



957-5404.4.5

Job #: 5404(OHVD)
Performed by **CLAYTON ROCKWELL** for:
CLAYTON 957
ROCKWELL, NC

Scale: 1 : 136
Page 1
Right-Suite® Universal 2023
23.0.04 RSU28036
2023-Oct-04 08:14:54
...ton Homes\Desktop\5404(OHVD).rup